



**DENTIMAX**

**Over 80 Enhancements,  
 Same Amazingly *Low Price***

**Practice Management**

- ✓ Electronic Insurance Claims
- ✓ Patient Statements
- ✓ Patient Ledger w/ Payment Entry
- ✓ Appointment & Revenue Scheduling
- ✓ ASAP & Recall Appointment List
- ✓ Custom Report Writer
- ✓ Line, Bar and Pie Charting
- ✓ Treatment Planning
- NEW!** Improved Insurance Benefit Tracking
- NEW!** 2006 ADA and CMS 1500 On-screen Editor
- NEW!** Enhanced Statement Management

“Cash-flow management is an important part of any office, and this software makes it easier.”

—Dr. Joe Blaes, Editor, Dental Economics

**All This For Just**  
**\$499**  
 For a Limited Time Only! Single User Version

**30 Day Money Back Guarantee**  
 on all DentiMax Practice Management and Clinical Records Software



For another **\$499**, add Clinical and other Advanced Features

**Clinical Records and Advanced Features**

- ✓ Clinical Charting
- ✓ Prescription Writing
- ✓ Perio Charting
- ✓ PSR Exams
- ✓ Visual Treatment Planning
- NEW!** Auto Clinical Notes
- NEW!** Insurance Estimate Override
- NEW!** Payment Plans
- NEW!** Late Charges

**Complete Network System  
 Only \$2499!**

**Now is the time to buy!  
 Call (800) 401-0091**  
[www.dentimax.com](http://www.dentimax.com)

**Visit us at the ADA Show in  
 San Antonio – Booth #315**



\*Windows® Vista® is a Registered Trademark of Microsoft Corp.

# Go Digital!

DentiMax makes it easy with digital sensors that work with your practice management software

**2 Year**

Sensor Warranty included with all sensor purchases.

## Crystal Clear X-Rays

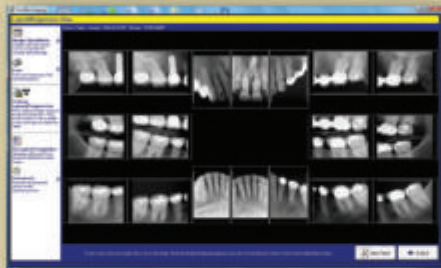
DentiMax Digital Imaging provides over 22 line pairs of resolution for excellent x-ray image quality and confident diagnosis.



## Universal Compatibility

DentiMax Imaging Software bridges to ALL the leading practice management software programs, including:

- ✓ SoftDent®
- ✓ Dentrrix®
- ✓ Easy Dental®
- ✓ PracticeWorks®
- ✓ EagleSoft®
- ✓ DentiMax®
- ✓ And **over 25** other practice management systems



## Unbeatable Price!

These prices can't last! Our image quality is second to none and so is our price! Don't buy a whole set to get low prices, buy only what you need. Hurry and take advantage of this great offer!

Finance payment options are available.

	Show Special Price
#1 Sensor	\$2,999
#2 Sensor	\$3,999
Sensor Box	\$1,199
Imaging Software	\$895

(\$175 for each additional computer)

Supplies are Limited! These prices end the last day of the show.

**DentiMax**  
Better Technology, Better Price

**Call Today!**  
**(800) 401-0091**  
www.dentimax.com



Visit us at the ADA Show in San Antonio – Booth #315



**PUNJABI DENTAL SOCIETY**



AN AWARD WINNER INTERNATIONAL ORGANIZATION  
 PROMOTING EXCELLENCE IN DENTAL EDUCATION  
 Over 1850 Members Strong

**Presents**

A Must attend seminar for you and your staff

**PERIODONTICS FOR GENERAL DENTIST  
 BY  
 DR. WILLIAM LUNDERGAN**

On  
**SEPT. 28TH, 2008 (Sunday) 9:00 am till 5:00 pm**  
**(AGD & CA Board 7 hrs C.E. units)**  
 At

**EMBASSY SUITES HOTEL**  
**900 EAST BIRCH STREET, BREA, CA 92821**

( Please print in capital letters or attach your business card )

Name DR/RDH/RDA/DA \_\_\_\_\_ Lic no \_\_\_\_\_  
 Circle one first middle initial Last

Address \_\_\_\_\_

city state zip  
 Phone no Fax no e-mail

ARE YOU A PDS MEMBER YES NO Membership no \_\_\_\_\_

**COMPLIMENTARY PARKING & LUNCH INCLUDED**

REGISTRATION FEE	Before Sept. 21st, 2008	After Sept. 22nd, 2008
Dentist Non-members	\$ 89.00	\$ 99.00
Members	\$ 79.00	\$ 89.00
Hygienist/R.D.A.Non-members	\$ 69.00	\$ 79.00
Members	\$ 59.00	\$ 69.00

FOR REGISTRATION / MEMBERSHIP / STAFF DISCOUNT OVER THE PHONE PLEASE CALL

TOLL FREE 1-866-422-5573 ( 1-866-4-CALL-PDS) OR 909-933-9076

We accept Visa, Master card, American Express & Discover

VISIT US ON OUR WEB SITE: [WWW.PDSOCIETY.COM](http://WWW.PDSOCIETY.COM) TO DOWNLOAD MEMBERSHIP FORM

**Dr. R. Salwan**  
 President

Make check payable to  
 PDS  
 815 W. HOLT BLVD. STE #402 ONTARIO, CA 91762

**Dr. D.P. Singh Nagra**  
 Chairman



**William Lundergan DDS, MA**

Dr. Lundergan is professor and chair of the Department of Periodontics at the University of the Pacific Arthur A. Dugoni School of Dentistry. He earned his certificate in periodontics from the University of Connecticut in 1983 and received a Master's of Education from the University of the Pacific in 1994.

He has served as a consultant to the California State Board of Dental Examiners and Veterans Administration dental clinics in Palo Alto and Martinez, California. He is a contributing author to the textbook, "Critical Decisions in Periodontology."

**This Seminar will cover**

- I. Pathogenesis of Periodontal Disease
- II. Periodontal Inflammation and Systemic Disease
- III. Classification of Periodontal Disease and Conditions
- IV. Periodontal Examination and Diagnosis
- V. Surgical and non-surgical approach
- VI. Periodontal Pharmacotherapeutics
- VII. Periodontal Instrumentation
- VIII. Periodontal Referral Guidelines. Risk benefit assessment .
- IX. Periodontal – Restorative Considerations





The logo consists of a thick, dark brown background. A yellow rope is coiled into a rectangular shape, framing a central yellow oval. The text "DARDEN DENTAL SUPPLY" is written in a bold, black, sans-serif font across the center of the oval. The rope has a detailed braided texture and frayed ends at the top and bottom.

**DARDEN DENTAL SUPPLY**



# Equipment Catalog

PHONE 1-800-290-4405

WEBSITE [DardenSupply.com](http://DardenSupply.com)



**Dennis Martinez**

Equipment Sales Manager  
1-800-290-4405 x 160

**Miguel Garcia**

Equipment Sales  
1-800-290-4405 x 161

**Darius Somekhian**

President  
1-800-290-4405 x 101

## Why Choose Darden?

**Experience.** Call on our experience and expertise when selecting dental equipment. Our equipment manager has over 20 years of experience, and our knowledgeable staff caters to your clinic's needs.

**Technical support.** We know our products inside and out. The Darden equipment department offers you the best technical support and hands-on service around. If there is a problem, we can fix it; from old to new, all models, any brand. We'll do it right.

**Above and Beyond.** From drafting blueprints to performing complex installations and working with construction crews and contractors, we'll take care of everything from start to finish.

**Vision.** At Darden, we are committed to ensuring that you select the right equipment for your needs and to helping you build the best possible clinic, from the ground up. Unlike most wholesalers who only perform minor equipment installations, Darden provides an array of installation services to get your clinic up and running. Our vision is to realize your vision.

## Operatory Packages

### DCI Pro Ensemble

DCI Equipment

Package Includes:

- DC1335 Chair
- Pro30 Delivery System
- 1244 Curved Operating Light
- Traditional Doctor's Stool
- Traditional Assistant's Stool



### Engle 360 with ComfortPlus™

Engle Dental

Package Includes:

- Engle 300 Hydraulic Chair
- Engle 360 Delivery System
- Engle 360 Assistant's Vacuum
- Engle 360 Light Delivery System



Note: Chair shown with optional Twisted™ with Ultra Leather and standard hidden vented.

## Operatory Packages

### Dentech Advance Operatory Package Dentech Corporation

The Dentech Advance Operatory package is designed to meet the needs of the busy practice. It incorporates design refinements which encourage productivity and maintain comfort levels for the entire dental team. Knowing that no two practices are the same, we offer Dentech Advance Operatory Packages in configurations and options suitable to meet your individual practice's needs.



### Mirage Operatory Package TPC Advanced Technology

Package Includes:

- Model 4000 Dental Chair
- Mirage Chair Mounted Delivery System
- Mirage Post Mount Utility Center
- Assistant's Instrumentation
- Dental Operatory Light

## Operatory Packages

### Dentech Eco-19 Patient Chair

Dentech Corporation

The patient chair is key to providing comfort for the patient and unabated access to the oral cavity for the dental team. The ECO-19 Chair offers the ultimate blend of features for both patient comfort and professional convenience.

Package Includes:

- Three programmable operating pre-set positions
- Moveable/removable left & right armrests
- Dual foot controls
- Standard magnetic pillow headrest
- Optional double articulating headrest
- Slim contoured backrest with compensated backrest tilt
- Built-in utility box
- Swivel chair movement with locking control
- Easy-to-clean exterior w/no painted/plastic components
- Comes with Dentech's five year warranty



## Nitrous Systems

### Nitrous Flowmeter

Belmed



- PC7 O2/N2O Sedation unit
- Minimum 30% oxygen
- Oxygen failsafe
- Oxygen flush
- Valved breathing circuit
- Solid block design
- Auxiliary O2 connection
- On/Off control

### Ultra PC Nitrous Flowmeter

Accutron



- **Single-Knob Total Flow Control**
- Oxygen Fail-Safe
- N2O Ratio Control with 70% Maximum
- Ever-ready Oxygen Flush
- Oxygen Resuscitation Connector
- Emergency Air Valve
- Directional Check Valve
- N2O Lock™ (Accutron Exclusive)

#### Specifications:

Dimensions 4 1/4" W x 10 1/2" H x 8" D

Weight 4.5 lbs.

Mixed Gas Outlet Diameter 7/8" nominal

Oxygen Inlet Male DISS (CGA-1240)

Nitrous Oxide Inlet Male DISS (CGA-1040)

Nitrous Oxide Mix Ratio Range 0-70%

Flow Range (max. readable each gas) 10 LPM Oxygen; 7 LPM Nitrous Oxide

Resuscitator Connector Quick Connect (1/4" Imperial)

Resuscitator Connector Flow 100 LPM

## Stools

### Stools

Darden Dental Supply

#### Hygenist Stool

16" dia. x 3.5" thick round seat with air lift and height. Adjustment from approximately 18" to 13" high with fixed foot rest.



#### Doctor Stool

16" dia. x 3.5" thick round seat with air lift and height. Adjustment from approximately 18" to 13" high with comfortable back support.



#### Ergonomic Hygenist Stool

This stool features a contoured seat with 3-way adjustable height, back tilt, and seat tilt support. Seamless upholstery. Extremely comfortable seat and back. Adjusts from approximately 23" to 30" high.



#### Ergonomic Doctor Stool

A contoured seat and 3 way adjustable height, back tilt, and seat tilt support with seamless upholstery makes this stool extremely comfortable. Adjusts from approximately 18" to 13.5" high.



### Upholstery Selections:

 Mauve DU-03	 Desert Rose DU-06	 Purple Grey DU-07	 Dusty Jade DU-11
 Black DU-100	 Cobalt DU-116	 Atlantis DU-201	 Autumn DU-202
 Wedgewood DU-14	 Grey Teal DU-15	 Taupe DU-18	 Greystone DU-19
 Ice DU-205	 Tumbleweed DU-210	 Cinnamon DU-213	 Stormy DU-220

### X-Ray Chair



#### X-Ray Chair

TPC Advanced Technology

Dimensions:  
Seat width: 18"  
Seat height ranges: 21.5" – 27.5"  
Base diameter: 24"  
Packing dimensions:  
31" x 20" x 12" / 48 lbs.  
18" x 7" x 5" / 16 lbs.  
25" x 24" x 4" / 13 lbs.



## Intraoral X-Ray

### Intraoral X-Ray Systems

Kodak Dental Systems

Kodak designs high-performance intraoral x-ray units that are reliable, easy-to-use, and backed by Kodak's expert support team.



#### 2200

The KODAK 2200 Intraoral X-Ray System features the performance of the previous generation of KODAK x-ray units plus an improved design for more accurate diagnosis and ease of use. The system is designed to meet all your needs for comfort, safety and efficiency. A very high frequency (DC) x-ray generator supports superior image quality and better safety conditions for your patients and your staff.

##### Specifications:

X-ray generator	High frequency (300 kHz)
Focal spot	0.7 mm
Tube voltage	60 kV, 70 kV
Mounting Options	Wall, ceiling, mobile, floor
3 Arm Lengths	Short (170 cm/67 in.), Standard (188 cm/74 in.), Long (205 cm/81 in.)
2 Types of Timer	Portable or separate
Timer Settings	kV, mA, adult/child, upper and lower jaw program, bitewing and occlusion function, film sensitivity
Options and Accessories	Synchronization link with KODAK RVG system, collimators

#### 2100

With the KODAK 2100 Intraoral X-Ray System, very high frequency (DC) technology is more affordable than ever before. Designed for dental professionals seeking ease of use and reliability, the system provides high quality results for accurate and safe diagnoses. The flexible and smart design helps meet the needs of almost any practice.

##### Specifications:

X-ray generator	High frequency (300 kHz)
Focal spot	0.7 mm
Tube voltage	60 kV
Mounting Options	Wall, ceiling, mobile, floor
3 Arm Lengths	Short (170 cm/67 in.), Standard (188 cm/74 in.), Long (205 cm/81 in.)
2 Types of Timer	Dual-installation layout - remote or integrated to the unit
Timer Settings	Manual time settings, film or digital mode
Options and Accessories	Synchronization link with KODAK RVG system, collimators



## Digital X-Ray Unit

### Veraview IC5 Digital Panoramic Unit

J. Morita Mfg. Corp.

Veraview IC5 by J. Morita Mfg. Corp. is a super high-speed digital panoramic x-ray equipment. DDAE (Digital Direct Automatic Exposure) and AIE (Automatic Image Enhancer) functions provide sharp and clear images.

- **Just 5.5 seconds and 1/5 effective dose**  
Unsurpassed exposure time and significantly lower dosage
- **High-quality images**  
DDAE and AIE functions provide sharp and clear images
- **Fully automatic simplified operation**  
Simply select the desired program: Panorama, TMJ or PEDO. In addition, no parameter setting is required
- **Quick and easy patient positioning**  
With integrated triple laser beam alignment
- **Compact, lightweight design**  
Weighs only 110 kg (242.5 lb.)  
35" W x 38.25" D x 92.5" H
- **Improved energy savings**  
50% of the power consumption of conventional x-ray units
- **Digital technology**  
No film and film development are required



## Handpiece Autoclaves

### Handpiece Autoclaves

SciCan



#### Statim 2000

- Ultra-fast 6-minute unwrapped cycle
- 14-minute wrapped cycle
- Exceptional instrument turnover
- 10-minute Dri-TecC drying technology
- Reduced instrument investment
- Prolongs instrument life

Specifications:	Statim 2000	Statim 5000
Dimensions	19" L x 16.25" W x 6" H	21.75" L x 16.25" W x 7.5" H
Cassette internal dimensions	11" L x 7" W x 1.5" H	15" L x 7" W x 3" H
Reservoir capacity	4.0 Liters (distilled water) Approx. 40 cycles	4.0 Liters (distilled water)
Weight without water	46 lbs.	72 lbs.
Power consumption	110-120 V, 60 Hz, 1300 W	110-120 V, 60 Hz, 1300 W
Optional printer		Type: Thermal printer Print: 20 characters/ line Speed: 1 line/ sec. Capacity: 80 cycles/ roll

#### Statim 5000

- Ultra-fast 9-minute unwrapped cycle
- 17.5-minute wrapped cycle
- Exceptional instrument turnover
- 15-minute Dri-TecC drying technology
- Reduced instrument investment
- Prolongs instrument life

## Autoclaves

### Manual and Automatic Autoclaves

Tuttnauer

Today, dental and private clinics are voicing the demand for better sterilization. Tuttnauer is your partner in protecting your patients and gaining their trust. Our state of the art sterilization technologies are designed to deliver quality without compromise.

Model	Chamber Volume	Chamber Dimensions	Cold Cycle Time	Hot Cycle Time
Manual Models				
<b>2340M</b>	19 Liter	7" x 13"	20 min.	12 min.
<b>1730M</b>	7.5 Liter	10" x 19"	12 min.	9 min.
Automatic Models				
<b>EZ9</b>	19 Liter	9" x 18"	30 min.	20 min.
<b>EZ10</b>	23 Liter	10" x 19"	30 min.	20 min.



2340M

### Omega ST Automatic Autoclave

O'Ryan Industries

The Omega ST is a fully automatic electric autoclave designed to provide reliable and high quality daily sterilization. Just push one button to control "Filling", "Sterilizing", "Opening Door" and "Dry" phases progressively. Turn on the main power switch and push just one program pad switch and the OMEGA ST commences operation. Automatically, it will fill the chamber with water, heat to sterilization temperature for the specified cycle minutes, and auto-open the door for venting which begins the 30-minute dry phase. Proven components and programming controls make the OMEGA ST very effective for continuous use.



#### Specifications:

Dimensions	15.35" W x 16.5" H x 20.8" D
Chamber Diameter	9.4" x 14.2"
Trays	11" x 6.7"
Water Reservoir Capacity	4.5 Liters
Voltage	115V, 50/60 Hz, 12 Amps 230V, 50/60 Hz, 6 Amps

## X-Ray Film Processors

### 810 Series Film Processor Dent-X



#### 810 Basic

Intraoral & Extraoral Automatic X-Ray Film Processing. Dry films in 4 1/2 minutes, endo wet readings in 2 minutes. 6 minute mode for warm-up and special applications.

#### Specifications:

Dimensions	30.5" L x 17.5" W x 14.5" H
Shipping weight	85 lbs.
Tank capacity	Developer and fixer solution trays hold 3 qts. each
Plumbing Requirements:	Open, cup-type drain and standard garden hose faucet with external threading Processor's female hose fitting connects easily to permanent plumbing (if permanent plumbing is used)
Water Requirements	1 1/2 gal. (5.68 liters)/min., only when processing
Power requirement	105-125 VAC, 60Hz, 6 Amp max, (optional 220 V 50 Hz or 220V 60Hz)
Film sizes	All intraoral and extraoral film sizes up to 8" maximum width

#### 810 Plus

The 810 Plus has all the same features as the 810 with the added benefit of an automatic on/off feature.

### Intra-X Film Processor Velopex



Shown with optional daylight loader

Intraoral Automatic X-Ray Film Processing. Dry-To-Dry 5 Minutes; 2.5 Minute Archivable Endodontic.

#### Specifications:

Dimensions	11" W, 21 3/4" D (daylight), 14 1/4" D (darkroom), 11 3/4" H
Weight	16 1/2 lbs. (empty), 26 1/2 lbs. (full tanks)
Tank capacity	1 qt.
Power requirement	110-120 V, 60 Hz, 8 Amp GFCI (other voltages available on request)
Warm-up time	10 mins approx.
Film feed speed	18 1/2" per min.
Film sizes	All intraoral including occlusal sizes
Processing time	2.5 mins approx (wet-endodontic) 5 mins approx (dry)

## Digital X-Ray Sensor

### Digital X-Ray Sensor XDR Radiology

- Instant radiographic images
- Lower radiation dose to patients
- Better control over image quality, despite the exposure level
- No problems associated with chemicals and developers
- Reduced labor
- No lost radiographs
- Secure and instant image storage and retrieval
- Large, detailed image display for diagnosis and treatment plan presentation
- Image enhancement for improved viewing
- Capability for electronic communication including claims filing



## Air Compressor

### Lubricated Air Compressor

Tech West

- Compressor design offers the quietest compressors in the industry
- The air is dried before the tank to prevent bacteria buildup in the tank
- All models have desiccant air drying systems
- Energy efficient motor reduces the need for costly boost transformers
- Compressors are available in single, dual or triple head configurations
- Vibration free copeland heads provide smooth running compressors
- Air intake filters trap dirt, dust and air born pollutants
- Energy efficient thermally protected motors
- Moisture indicators standards on all models



## Vacuum Pumps

### Vortex Series Vacuum Pumps

JDS

These pumps are the strongest, most reliable pump ever designed specifically for dentistry. They are known for their minimum power loss and durability because of the individual attention given to each equipment produced. With an unrivaled longevity, the Vortex is the only smart choice. Feel the power of the Vortex!

#### Vortex I

Model	Max. Users	No. Pumps	Total H.P.	Total Amps	Volts	Hertz	Height	Width	Depth	Ship Weight
JVBS10S	2	1	1	16/8	115/208-230	60	16"	12"	12"	60 lbs.



#### Vortex II

Model	Max. Users	No. Pumps	Total H.P.	Total Amps	Volts	Hertz	Height	Width	Depth	Ship Weight
JVBTW20S	5	2	2	32/16	208-230	60	21"	28"	15"	132 lbs.







**ENGLE**  
DENTAL SYSTEMS

## *Engle 320*

*Featuring:*

Engle 300 Hydraulic Chair  
Engle 320 Delivery System  
with telescoping assistant's arm  
Light Delivery System

**Engle 320**



Shown with optional  
Hidden Umbilical & Twin Stitch Upholstery.

## *Engle 360*

*Featuring:*

Engle 300 Hydraulic Chair  
Engle 360 Delivery System  
Engle 360 Assistant's Vacuum  
Engle 360 Light Delivery System

**Engle 360**



Shown with optional  
Twin Stitch Upholstery.

**ENGLE**  
DENTAL SYSTEMS

*For more information, call Darden Dental Supply at (800) 290-4405 x 160.*

# Over 80 Enhancements, Same Amazingly **Low Price**

## Practice Management

- ✓ Electronic Insurance Claims
- ✓ Patient Statements
- ✓ Patient Ledger w/ Payment Entry
- ✓ Appointment & Revenue Scheduling
- ✓ ASAP & Recall Appointment List
- ✓ Custom Report Writer
- ✓ Line, Bar and Pie Charting
- ✓ Treatment Planning

- NEW!** Improved Insurance Benefit Tracking
- NEW!** 2006 ADA and CMS 1500 On-screen Editor
- NEW!** Enhanced Statement Management

“Cash-flow management is an important part of any office, and this software makes it easier.”

— Dr. Joe Blaes, Editor, Dental Economics

All This For Just

# \$499

For a Limited Time Only! Single User Version



For another **\$499**, add Clinical and other Advanced Features

## Clinical Records and Advanced Features

- ✓ Clinical Charting
- ✓ Prescription Writing
- ✓ Perio Charting
- ✓ PSR Exams
- ✓ Visual Treatment Planning

- NEW!** Auto Clinical Notes
- NEW!** Insurance Estimate Override
- NEW!** Payment Plans
- NEW!** Late Charges
- NEW!** Electronic Remittance Advice (ERA) with Auto Posting

**Complete Network System**  
**Only \$2499!**

**Call Darden  
Dental Supply to Order  
(800) 290-4405**



# VECTOR

German Engineering - American Value!

Introducing

## The VELOCITY series highspeed!

Features:

- High performance German Engineering - Quality performance!
- Solid glass rod fiberoptics - Will not dim over time!
- Push Button Bur release - No more bur tools!
- Optimal angle body shell - Improved ergonomics!

Now available in your choice of 3 coupler styles



Connect directly to your existing KaVo, Star or NSK Swivel Coupler!

KaVo

Star Dental

NSK

Available in 3 head sizes from large head high torque to mini access head.

V8

V9

V10



Available multiport water spray for improved bur cooling without the clogging of our competitors!



### Velocity V10 ..... Call for discount pricing!

Torque head, 3-port water spray, push button autochuck bur release, available in optic and non-optic versions

	Optic	Non-optic
to fit KaVo Multiflex™	V10-SLK	V10-SK
to fit Star Style	V10-SLS	V10-SS
to fit NSK Type	V10-SLN	V10-SN

### Velocity V9 ..... Call for discount pricing!

Access head, 3-port water spray, push button autochuck bur release, available in optic and non-optic versions

	Optic	Non-optic
to fit KaVo Multiflex™	V9-SLK	V9-SK
to fit Star Style	V9-SLS	V9-SS
to fit NSK Type	V9-SLN	V9-SN

### Velocity V8 ..... Call for discount pricing!

Ultra access head, single-port water spray, push button autochuck bur release, available in optic and non-optic versions

	Optic	Non-optic
to fit KaVo Multiflex™	V8-SLK	V8-SK
to fit Star Style	V8-SLS	V8-SS
to fit NSK Type	V8-SLN	V8-SN

## Specials

Special offers good Sept. 1 2008 - Dec. 31 2008. Fax a copy of your Darden Invoice to 253-564-5084 to redeem your free goods.

### Special # 1

Buy 2 Vector Velocity or F-Series non-optic highsPEEDS and get 1 VKS swivel FREE!

Buy 2 Vector Velocity or F-Series optic highsPEEDS and

get 1 VKS-5 or VKS-6 swivels FREE!

Available on KaVo style handpieces only!

### Special # 2

Buy 3 Vector Velocity or F-Series Highspeeds and get 1 PB500 Stainmaster prophylaxer FREE!



### Special # 3

Buy 4 Vector Velocity or F-Series Highspeeds and get 1 FREE! Equal or lesser value only.



## The original F-Series - Uncompromised Value!

Compare to KaVo 659B



Compare to KaVo 635B

### F-Series F6 ..... Call for discount pricing!

Torque head, 3-port water spray, push button autochuck bur release, available in optic and non-optic versions

	Optic	Non-optic
to fit KaVo Multiflex™	F6-SLK	F6-SK

### F-Series F7 ..... Call for discount pricing!

Access head, 3-port water spray, push button autochuck bur release, available in optic and non-optic versions

	Optic	Non-optic
to fit KaVo Multiflex™	F7-SLK	F7-SK

### F-Series F4 ..... Call for discount pricing!

Ultra access head, single-port water spray, push button autochuck bur release, available in optic and non-optic versions

	Optic	Non-optic
to fit KaVo Multiflex™	F4-SLK	F4-SK



### Swivel Couplers and Parts

- A) Non-optic 4 line swivel ..... VKS
- B) Optic 5 hole swivel ..... VKS-5
- C) Optic 6 pin type ..... VKS-6
- D) Replacement bulb pack of 2 ..... VKB for Vector and KaVo Multiflex™ swivel couplers. Direct replacement for KaVo # 553.3881.
- E) Replacement o-ring kit ..... RP-008 for Vector and KaVo Multiflex™ swivel couplers. Direct replacement for KaVo # 905.311.

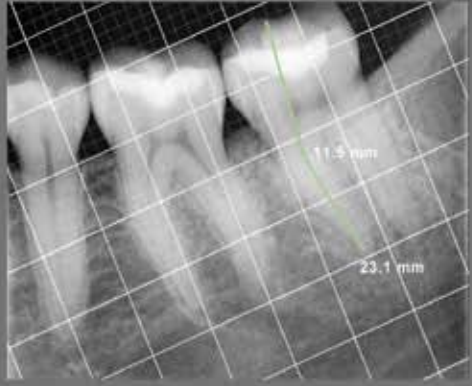
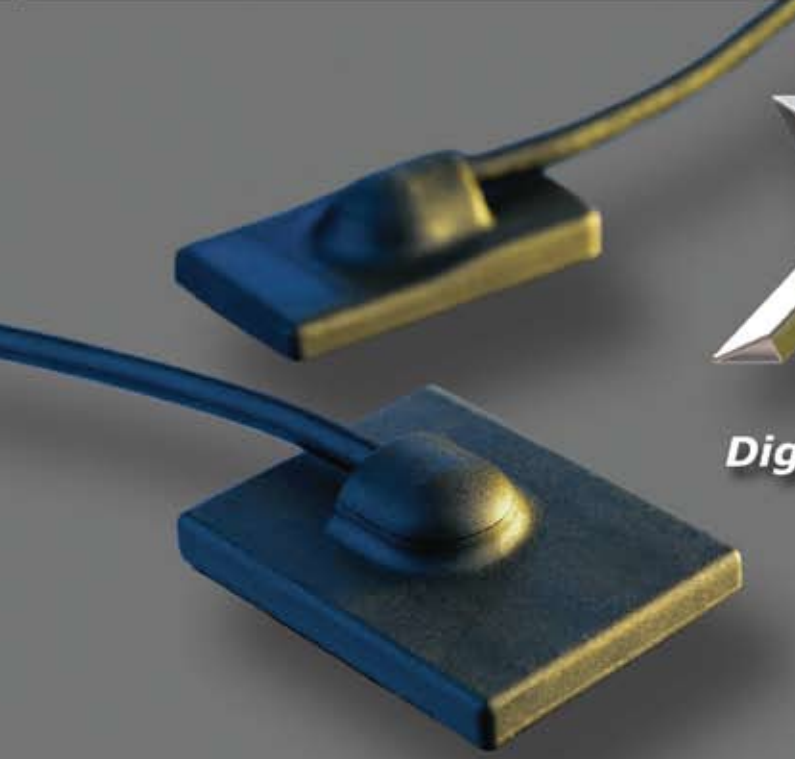
Multiflex is a trademark of KaVo. Vector handpieces are not manufactured by or in any way connected to KaVo.



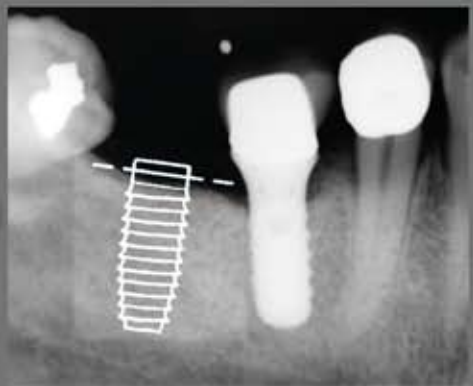
# XDR

*Digital Radiographic Armamentarium  
Created By Dentists For Dentists*

*Real Diagnostics  
Real Tx Planning  
Real Simple*



*Proprietary Measurement  
and Visualization Tools  
for More Effective Diagnosis  
and Treatment Planning*



*Exceptional Images  
Affordable and Expandable  
Bridges to Practice Management*



*Works With:  
Intra and Extraoral X-Rays  
Intra and Extraoral Cameras*



*"The best software you haven't heard of"  
- Dr. Lorne Lavine, author of "Digitizing Your Practice"*

*To schedule a demonstration please contact  
Darden Dental Supply at (800) 290-4405*

# LEAD-FREE PROTECTIVE APRONS



*Bib Apron  
without collar*



*Bib Apron with  
attached collar*



*Panoramic Apron*

## The safety of lead protection without the lead or the weight.

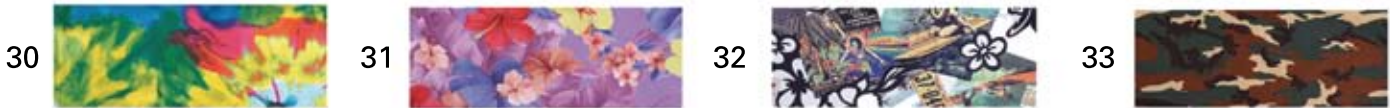
Choose from tye-dye, tropical, hawaiian or camouflage,

Our new aprons are made of environmentally friendly lead-free, non-toxic materials, they're lighter weight and more flexible than conventional lead aprons, but have the same protective qualities!

All Flow no lead protective apron styles are 0.25mm lead equivalency protection, aprons are backed with a tear resistant cling back. Separate thyroid collars are available in the 4 fabrics shown. Please note that these four patterns are only available with the lead free feature

### To order your Lead-Free Apron

To order a no lead protective apron take the stock number (shown below) and place the fabric # after it. Example: If you wanted to order a Bib Apron without a collar in the "Tye Dye" fabric your order # is **75050NL-30**.



Description	size	stock number
Bib Apron without collar	24 X 26"	75050NL (+ color #)
Bib Apron with attached collar	24 X 26"	75051NL (+ color #)
Child size Bib Apron with attached collar	20 X 20"	75053NL (+ color #)
Panoramic Apron	24 X 27"	75061NL (+ color #)
Thyroid Collar	5 X 27"	75056NL (+ color #)



The EVA Family  
of Dental Digital X-Ray Sensors

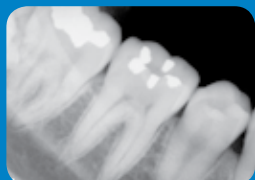
**Pay Less. Get More.**



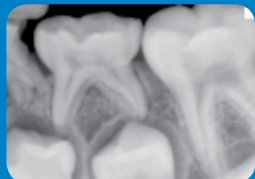
**Proven, Reliable and Affordable**



**3-Room Installation for  
Less Than You Think**



**Free Technical Support**

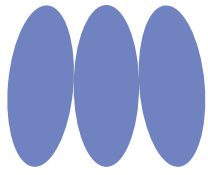


**Designed for Patient Comfort**

**Fully Compatible With Your  
Practice Management Software**

**DENTIX**<sup>®</sup>  
An AFP Imaging Company

Contact Darden Dental Supply For More Information  
[www.afpimaging.com](http://www.afpimaging.com)



# MORITA

Thinking ahead. Focused on life.

Lubrina Handpiece Maintenance System



TwinPower Turbine®  
High Speed Handpiece

Root ZX® II Apex Locator  
With Low Speed Handpiece Option



Order from  
Darden Dental Supply  
800.290.4405



# TECH WEST INC.

*Simply the best dental vacuums and dental compressors in the industry*

## LUBRICATED AIR COMPRESSOR

Tech West Ultra Clean Lubricated Air Compressors are designed to meet your needs with our high performance drying system. We guarantee the clean, dry, oil free air you expect. The design of the lubricated compressor offers vibration free running. They are offered in a variety of configurations; singles, duels or triples to meet any need.



## THE ROCKY SERIES

The Rocky Series Oilless Air Compressors provide 100% oil free air to the dental office. With our high performance air drying system, we guarantee the clean dry air you expect. The design of the Tech West Rocky Series Air Compressor provides smooth, quiet, vibration free operation at only 65 dB-a noise level. We offer them in twin, triple or quad head configurations to meet most any need of today's Dental Practice.



 **TECH WEST INC.**

Call Darden Dental Supply to Order  
**800-290-4405**

Call us at

323-547-1077

**(888) DDS•FIXX**

*to schedule an appointment*

**REGULAR SERVICE ONLY \$110 AN HOUR**



*Our Service and Equipment department has factory trained technicians from manufacturers such as Engle, DCI, Belmont, Dentech, Dental EZ, Star and more!*