

The logo consists of a thick, dark brown background. A yellow rope with a black outline is coiled into a rectangular shape with rounded corners, framing the central text. Inside this rope border is a yellow oval with a white outline. The text "XCEL SEMINARS" is centered within the oval in a bold, black, sans-serif font. The word "XCEL" is on the left and "SEMINARS" is on the right, with a space between them.

XCEL SEMINARS



5th Annual Comprehensive Dental Skills Series

Knott's Berry Farm Resort Hotel

June 23, 2013: Achieving Long-term Composite Success

Dr. Lou Graham, is back by popular demand for a brand new topic! He is an expert in conservative dentistry and an exceptionally educational and entertaining speaker.

July 21: Comprehensive Pediatric Dentistry for GP's

Dr. Carla Cohn lectures internationally on risk assessment, prevention, behavior management and restorative treatment options for children.

Sep. 22: Minor Ortho and Appliance Therapy for Adults and Children

Dr. Rob Vies has been practicing for almost 30 years, was a professor at USC for 12 years and lectures nationally on restorative dentistry and appliance therapy.

Oct. 27: Modern Ceramic Restorations—Work Smarter, Not Harder

Dr. Foroud Hakim is Vice Chair of the Department of Restorative Dentistry at University of the Pacific and also maintains a private practice. He discusses complex rehabilitations to conservative single tooth restorations.

Nov. 10: Enriching your Restorative Dentistry with the Latest Materials and Techniques

Dr. Jeff Brucia is in private practice, an Associate Professor at the University of the Pacific and is the Present Chair of the California Dental Association Board of Managers.

June 23 course at Radisson Suites Hotel Buena Park 7762 Beach Blvd, Buena Park, CA 90620, CA

All other courses at the The Knott's Berry Farm Resort Hotel, 7675 Crescent Ave, Buena Park, CA

(Both hotels are minutes from the 5, 405 & 91 Fwys)

**ALL COURSES ARE ON SUNDAYS & 7 CA & AGD CEs EACH
\$139 EACH OR THE ENTIRE 5 COURSE SERIES
(35 CA & AGD CES) FOR ONLY \$399**

**BONUS
HANDS-ON
COURSE:
ONLY
\$229**

Nov. 24, 2013: Hands-on Pediatric Dentistry *Dr. Fred Margolis is a pediatric dentist, an expert on Pediatric care, lectures internationally and has been named a "top clinician in continuing education" by Dentistry Today Magazine.*

COURSE SERIES
SPONSORED BY:



Doxa



SDI



'GC'

COURSE TOPICS

Achieving Composite Success: This course will review the very latest products and techniques that truly will allow you to take a refreshed look at composite procedures and ensure your long term success, including: Understanding and solving the top three reasons why sensitivity does occur and how easy they are to resolve ♦ How lights, glass ionomers and composites all fit together to ensure long lasting asymptomatic restorations ♦ The very latest in caries removal, single tooth anesthesia, low shrink/stress composites and how these will all change your approach to composites ♦ Case-by-case examples of Class I, II, IV, V, composites and the very latest on sealants ♦ Anterior combination casework that combines direct and indirect approaches with lab communication tools, all with the philosophy of "Conservative Dentistry"

Comprehensive Pediatric Dentistry: Dr. Cohn shares behavior management, many of the "everyday questions" that parents ask, the latest trends in decay, and a plethora of preventative strategies and restorative techniques applicable to GPs. Attendees will learn how to: complete an examination for infant, toddler and school aged children, effectively manage kid's and parental behavior and answer parents concern with confidence ♦ recognize the stages of dental disease ♦ use a risk assessment tool ♦ prevent caries from progressing ♦ provide different restorative options ♦ Esthetic facings for stainless steel crowns and chairside/laboratory steps ♦ Esthetic space maintainers and their easy fabrication

Minor Ortho and Appliance Therapy: Dr. Veis will teach how to add interceptive orthodontics for children and appliance therapy minor tooth movement to your cosmetic cases, including: Helping children with simple space maintenance, anterior crossbites, posterior crossbites and eliminating bad habits from causing malocclusion ♦ Recognize the stages of dental disease ♦ Techniques to fix anterior crowding ♦ Minor tooth movement and veneers ♦ An easy 6 month braces technique ♦ Keeping patients by making final retainers ♦ New proven to control periodontal disease

Modern Ceramic Restorations: With the explosion in ceramic material choices in today's indirect restorative arena, practitioners often find themselves puzzled about what type of crown to prescribe for a given indication. Special emphasis will be placed on strategies and techniques that lead to optimal outcomes with regards to quality, while increasing speed and productivity. Real strategies will be provided to the audience to maximize the efficiencies in their crown and bridge practice while delivering long lasting and beautiful restorations that increase patient satisfaction! The course aims to demystify the selection criteria. The audience will learn: current ceramic classes ♦ selection rubric ♦ indications across anterior, posterior, single and multi-unit ♦ preparation design ♦ full-proof impression techniques ♦ cementation vs. bonding rationale ♦ modern supportive armamentarium and gadgetry

Restoratives Update: It is estimated that more than 80% of restorative failures are due to clinical error. This lecture course provides an overview of the restorative options and a comprehensive discussion of the ever-changing world of dental adhesives, guiding you through the collection of materials and techniques available for both direct and indirect restorations, including: The options available in adhesive systems including the new advancements in Glass Ionomers ♦ Eliminating the frustration of post-operative sensitivity and restorative failure ♦ The materials and techniques for Class I, II & V restorations ♦ Techniques and materials for repairing porcelain fractures ♦ Achieving predictable esthetic results with anterior implants ♦ Techniques for the preparation, impressions, temporization, lab communication, material selection and cementation of indirect restorations.

Hands-on Pediatric Restorations (an additional fee is required for this course): Today's parents demand the best restorations of their children and teen's teeth for function and esthetics. Discussions will include: Glass ionomers, resinomers, composites, and various types of crowns ♦ Esthetic facings for stainless steel crowns and chairside/laboratory steps ♦ Esthetic space maintainers and their easy fabrication ♦ Enamel microabrasion, direct-bonded and porcelain veneers for teenage patients. **Hands-on will include:** Class I and II primary molar prep ♦ Class I and II primary molar restoration ♦ Pulpotomy prep and use of dentin replacement materials ♦ Stainless steel crown preparation ♦ NuSmile crown preparation- molar

REGISTRATION

TUITION	5 COURSE SERIES	EACH INDIVIDUAL COURSE
More than 14 days before an event	Dentist: \$399 , Staff: \$279 Add \$229 for the Pedo Hands-on Course	Dentist: \$139, Staff: \$119 \$329 for the Pedo Hands-on Course
Less than 14 days before an event	Dentist: \$419, Staff: \$299 Add \$249 for the Pedo Hands-on Course	Dentist: \$159, Staff: \$139 \$349 for the Pedo Hands-on Course

Fees include continental breakfast, CE credits and free hotel parking. Registration is at 7:30am, the course is 8am-3:30pm. It is an extra \$20 fee for all onsite and walk-in registrations.

Last Name _____ First Name _____ Email _____ Phone _____

Address _____ City _____ State _____ Zip _____

Cancellation Policy: Series registration is non-refundable. For individual courses, with written cancellation at least 14 days prior to a seminar, a refund will be issued less a \$50 cancellation fee. No refund or credit less than 14 days from an event.

Additional registrants _____ Course Dates: _____ Total Amount _____

Register online at www.xcelseminars.com

Mail checks to: Xcel Seminars, PO Box 441745, Aurora, CO 80044 • If you have any questions please call Erin at 310-663-4055

Although Xcel Seminars does have sponsorship relationships with dental manufacturers and suppliers, we are dedicated to providing only evidence-based information in our courses.



Approved PACE Program Provider FAGD/MAGD Credit Approval does not imply acceptance by a state or provincial board of dentistry or AGD endorsement. (10/01/11) to (09/30/2015) We are a California Board Approved provider, permit #4536, Valid until 7/31/13

A decorative banner with a rope border. The banner is yellow with a white outline and contains the text "AAFE" in a bold, black, stylized font. The rope border is yellow with a black outline and is tied in a knot at the top center.

AAFE

2120 South Green Road
South Euclid, OH 44121

WWW.FACIALESTHETICS.ORG
800.952.0521



[SCAN FOR DETAILS]

REGISTER TODAY!
LIMITED AVAILABILITY!

SIGN UP BY JULY 1ST & SAVE UP TO \$1,000



Botox® and Dermal Filler
Training for Every Practice

Frontline TMJ, Headache
and Facial Pain Therapy

2013 COURSE CATALOG
WWW.FACIALESTHETICS.ORG

ABOUT US



HOW ARE WE DIFFERENT?

The American Academy of Facial Esthetics (AAFE) is the premier live patient training organization for Botox and dermal fillers for dental esthetic and pain therapeutic uses in the oral and maxillofacial areas. The AAFE provides the most comprehensive training to achieve the best esthetic and therapeutic outcomes within the scope of state dental practice acts. Our outstanding post-course support will insure successful procedure integration into your practice and is only available through the AAFE.

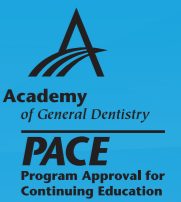
OUR RENOWNED FACULTY:

Louis Malcmacher DDS MAGD
Kristine Krever MD DABFM
Peter Harnois DDS
James Jesse DDS
Tony Feck DMD DDOCS
Lisa Germain DDS
Gigi Meinecke DDS
Jill Lezaic MD
Anthony Scarcella MD
David Kimmel DDS
Shannon Gunderson RN BSN
Lisa Reyna PA
Jami Larsen RN
Maria Becker RN



MEMBER BENEFITS:

- Exclusive incentives on products and seminars
- AAFE Accreditation
- AAFE Advanced Hands-on Training Seminars
- Online Search Directory
- Professional Marketing Materials
- Exclusive Member Videos
- Monthly Newsletter
- Discussion Boards and Case Presentations
- Mentoring & Advocacy
- DVD Educational Programs
- Financial Incentives from Business Partners



EARN UP TO 24 PARTICIPATION CE CREDITS!

CE credit provided by Common Sense Dentistry which is designated as an approved PACE Program Provider by the Academy of General Dentistry. The formal continuing education programs of this program provider are accepted by the AGD for fellowship, mastership, and membership maintenance credit. Attendance in any of the courses in this brochure will provide 8 hours of participation credits per day and 24 hours total for all three days.

[AAFEJUN13]

Botox® and Dermal Filler Training for Every Practice

THE BEST COMPREHENSIVE LIVE PATIENT TRAINING AVAILABLE

The AAFE Botox and dermal fillers live patient training course objective is to enable attendees to offer practical concepts, techniques and new dental services, and be proficient with the materials, techniques, and instrumentation of Botox and dermal fillers. We comprehensively train dental professionals in the dental esthetic and therapeutic uses in the oral and maxillofacial areas so they can immediately integrate this into their daily practice.

UPCOMING COURSE DATES

June 14-15.....Cleveland	August 2-3.....Orange County, CA (Level I, III)
June 14-15.....Scottsdale	August 2-3.....Boston
June 21-22.....Atlanta w/ GDA (Level I, II)	August 9-10.....New Jersey
July 12-13.....Portland, OR	August 9-10.....Chicago (Level I, II)
July 12-13.....New Orleans	August 16-17.....New York City (Lvl. I, II, III)
July 19-20.....Lexington	August 16-17..... NEW! Honolulu, HI
July 19-20.....Indianapolis	September 20-21.....Pittsburgh
July 26-27.....Houston	

COURSE HIGHLIGHTS

- Patient assessment and consultation for Botox® and dermal fillers
- Botox for dental esthetic and dental therapeutic uses in the maxillofacial areas
- Integrating Botox and dermal fillers into your dental treatment plans
- Management and treatment of possible complications
- One on one instruction as you work hands-on with your live patient
- Beautiful lip enhancements, enhancing the cupid's bow, and creating proper lip to teeth relationships for proper smile and lip lines
- Volumizing nasolabial folds, marionette lines, and lifting up the corners of the mouth

SIGN UP & SAVE!

SIGN UP BY JULY 1ST & SAVE MORE!

Save \$500! Tuition for Any Two Days: ~~\$3497~~ \$2997.

Save \$600! AACD/AGD Members: ~~\$3497~~ \$2897.

Save \$700! AAFE Members: ~~\$3497~~ \$2797 and bring a team member for FREE!

Save \$1,000! All Three Days Tuition: ~~\$5497~~ \$4497.

Non-AAFE Members: Additional team members add \$395/day.

Save Over \$3000! Sign up for all three days, AAFE membership, and bring two team members for FREE! All for only \$4797

Frontline TMJ, Headache and Facial Pain Therapy

LIVE PATIENT TWO DAY COURSE

Many of your friends, family, and patients suffer from some form of headaches, migraines, stress, occlusion, and TMJ. This course is the missing link that will teach you how to comprehensively evaluate, diagnose, and treat those who suffer from TMJ syndrome and myofascial pain.

UPCOMING COURSE DATES

June 13-14.....Cleveland	August 1-2.....Orange County
June 13-14.....Scottsdale	August 1-2.....Boston
June 20-21.....Atlanta (w/ GDA)	August 8-9.....Chicago
July 11-12.....Portland, OR	August 15-16.....New York City
July 11-12.....New Orleans	August 15-16..... NEW! Honolulu, HI
July 18-19.....Indianapolis	September 19-20.....Atlanta (w/ GDA)
July 25-26.....Houston	

COURSE HIGHLIGHTS

- How to quickly identify and diagnose headache and facial pain patients in your practice
- Learn why you should not initially spend a dollar on expensive equipment for facial pain diagnosis and treatment
- Learn the two most important free tools used to diagnose myofascial pain
- No more "occlusion confusion" when it comes to TMJ treatment
- Learn on live patients how to precisely identify and inject trigger points for instant and long term pain relief
- Understand when to use different chemotherapeutics for best short-term and long-term therapeutic outcomes
- Learn when to treat and when to refer myofascial pain patients
- Understand the use of chemotherapeutics such as Botox for simple and effective pain management and differential diagnosis
- One-on-one comprehensive mentored instruction

TESTIMONIALS

The AAFE course is one of the most comprehensive and fantastic courses I have ever taken. We learned so much about proper techniques. I can't believe how much information they packed into two days. The best part of the course was the live patient hands-on. I feel so comfortable going back to my office and starting right away.

— **Kathrynne Dryke, DDS**

"I'm so glad to have attended this course! In just one day of learning I feel as if I can confidently & competently treat the many TMJ and facial pain sufferers in my practice. It's exciting to know that without a doubt I can bring them relief from their pain. Let me at 'em!"

— **Kelly Edward, DDS**



SyncUp

FOLLOW, FRIEND & CONNECT!

TWITTER: @FACIALESTHETICS

EMAIL: FEEDBACK@FACIALESTHETICS.ORG

FACEBOOK: FACEBOOK.COM/FACIALESTHETICS



SignUp

NAME _____ TITLE _____ AGD# _____

ADDRESS _____ CITY _____ STATE _____ ZIP _____

E-MAIL _____ DENTAL LICENSE # _____ STATE _____

PHONE _____ MOBILE _____

DATES ATTENDING FRONTLINE TMJ AND FACIAL PAIN COURSE _____

DATES ATTENDING BOTOX® AND DERMAL FILLER TRAINING COURSE _____

HOW DID YOU HEAR ABOUT THIS COURSE? _____

PAYMENT IN THE AMOUNT OF _____ TO BE PAID BY _____

VISA MASTERCARD DISCOVER AMERICAN EXPRESS

CARD NUMBER _____ EXP. DATE _____ CVV* CODE _____

Submit

SEND IN BY JULY 1ST & SAVE UP TO \$1,000!

FAX: 216.395.0110

EMAIL: SALES@FACIALESTHETICS.ORG

CALL: 1.800.952.0521 TO REGISTER

HURRY!
Courses Sell
Out Quickly

TERMS & CONDITIONS

Model Patients: It is recommended that each participant brings a model patient to treat and will need to purchase one vial of Botox® and one syringe of dermal filler material for the appropriate course from the course sponsors. Additional vials and syringes will be available for purchase at the course if participants would like additional practice.

Cancellation Policy: Fully refundable no later than 5pm same date one month before course minus \$775 handling fee. No refunds after same date one month before course. We reserve the right to cancel a course and cannot be responsible for hotel deposits or non-refundable airline tickets or any other associated fees. We take no responsibility regarding state board requirements. Participants are responsible for determining whether they are able to perform these procedures. Please refer to our website for complete policies.

California: CA dentists can now place Botox/Dermal Fillers as defined by the CA B. & P. Code section 1625. The American Academy of Facial Esthetics is a CE register provider #5032 by the Dental Board of California.

NJ & GA: 21 Hour AAFE Board Approved Courses in NJ and GA additional \$300 tuition.

The logo consists of a thick, yellow rope with a braided texture that forms a rectangular border with rounded corners. Inside this border is a yellow oval with a thin white outline. The text 'GLOBAL MINI IMPLANTS' is centered within the oval in a bold, black, sans-serif font. The rope has two frayed ends at the top, suggesting it is a loop.

GLOBAL MINI IMPLANTS

One-on-One Private Implant Dentistry Mentorship



The future of dentistry is in your hands!
Make headway with Implant dentistry...

63 CE





The One-on-One Mentorship™ Training in Implant Dentistry

The One-on-One Mentorship™ Program

One-on-One Dental Implant training program is design for clinicians with a minimal exposure and interested in advancing in the field of implant dentistry. The One-on-One mentorship program offers a team of qualified faculties for you to choose from. Along with the private mentor, the participating clinician will also have access to innovated lectures given by our GDIA directors and special guest lecturers throughout the year. This private mentor program training consists of 9 Modules and participants will receive **63 CE** units from the California Dental Board at time of completion.

Detailed course description [9 full days of training]:

[1-2 Modules] All day lectures

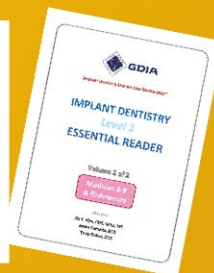
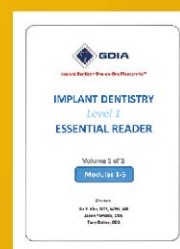
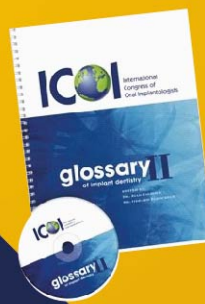
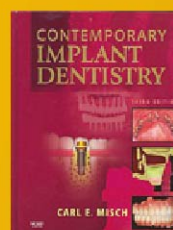
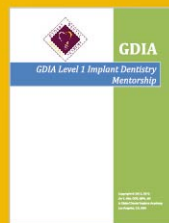
[3-8 Modules] Total of 6 full-days of clinical case mentoring on: x-ray, treatment planning, case selection and hands-on live patient surgery.

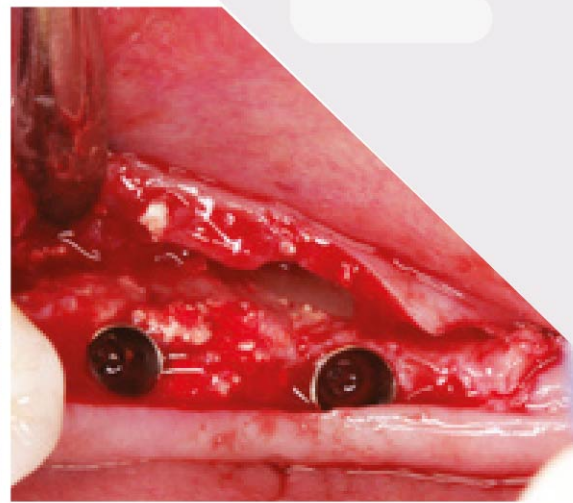
[9 Modules] Lecture: "Incorporating dental implants to your everyday practice" all office staffs welcome!

**Participants of One-on-One Mentorship program are encouraged to charge patients for dental implants placed.

Benefits of Participants

- 1) Certificate of Completion from GDIA
- 2) Program Handbook & Study Guide
- 3) Textbook:
 - Contemporary Implant Dentistry 3rd Ed. by Carl E. Mish (a \$187 value)
 - Dental Office Medical Emergencies 4th Ed. by Lexi-Comp (a \$67 value)
- 4) One year membership for International Congress of Oral Implantologists (ICOI - a \$350 value)
- 5) One year membership for GDIA (a \$295 value)





The One-on-One Mentorship™ Program

This "One-on-One" advanced on-site implant training program offers 64 CE units from the California Dental Board. "One-on-One" training program is integrated with didactic, clinical observation, and hands-on surgery. This program consists of 9 days of hands-on implant training, where an on-site qualified GDIA mentor will guide and supervise live-implant surgery as needed. In addition, the participating office staffs will enhance knowledge in patient care implant procedure and implant equipment set-up and handling, giving you the essential skills and knowledge for a successful future in implant dentistry!

Course Outline

Module 1 & 2	2 full day sessions of didactic course
Module 3 - 8	6 full days of clinical case mentoring, including hands-on, live patient care (surgery and restorative sessions) with the GDIA Mentor
Module 9	1 day team session "incorporating dental implants to everyday practice"

The Mentors of GDIA



Nick Bautista, DDS



Cary D. Brown, DDS



Diaa Samir Fahmy, DDS



David Farivar, DMD



Rene Ghotanian, DDS



Arash Hakhamian, DDS



Khai M. Ma, DDS



Malek Mansour, DDS,
MAGD, PhD



Amik Maytesyan, DDS



Alex L. Nguyen, DDS



Charles C. Park, DDS



W. Eric Park, DDS



Vinod Rana, DDS



Saied Razi, DDS,
PhD, CDT



Sanjeev Sharma, DDS



Roger D. Sohn, DDS



Cameron Torabi, DDS



Vincent Wang, DDS, MS



The Directors of GDIA



Jin Y. Kim, DDS, MPH,
MS, FACD



Jason M. Yamada, DDS,
MS



Tony Daher, DDS,
MSED, FACP



Please contact
GDIA at
T. 323-617-4141
or send us the registration
form via e-mail or fax:

Tuition: \$19,000 (Member) / \$25,000 (Non-member)
CE Credit: 63 CEU

*Refunds are granted only if a written cancellation notification is received at least 21 days before the course. 50% of the tuition minus processing fee will be refunded if cancellation occurs within 14 days before this course. No refund is granted afterwards. A \$75 fee is withheld for processing. For additional registrations, xerox and send.

E-mail:
info@GlobalImplantTraining.com
Fax:
323-617-4145



Live-Patient Surgery Training Course in Tijuana, Mexico

Mark Your Dates Now!

Friday Apr 26, 2013 - Monday Apr 29, 2013
Friday May 24, 2013 - Monday May 27, 2013
Friday Aug 2, 2013 - Monday Aug 5, 2013
Friday Oct 18, 2013 - Monday Oct 21, 2013

14 CE

Course Description

The 'Hands-On Live Patient Surgery' course is an advance session that will cover Maxillary Sinus Augmentation, Guided Bone Regeneration (GBR), and Soft Tissues procedures. This program is open to clinicians with previous exposure to implant dentistry. Participants will receive **14 CE Units** from the California Dental Board at time of completion. All hands-on cases are selected and pre-screened by GDIA faculty members before date of surgery. All surgical materials and instruments will be provided. Each participant is expected to see as many patients in the time allocated. This course will be held in Tijuana, Mexico and requires 3 nights stay. Participants are responsible for check-in at San Diego and transportation from San Diego to Tijuana will be provided. Lodging and meals will be provided in a safe and comfortable hotel facility.



Course Schedule

Day 1 Friday

- 5:00PM Meet at San Diego International Airport.
Travel across the border to Tijuana via transportation provided by GDIA
- 7:00PM Check-in at hotel, and orientation begins after dinner

Day 2 Saturday

- 7:00AM - 8:00AM Breakfast
- 8:00AM - 9:00AM Introduction : Surgery Planning
- 9:00AM - 12:00AM Surgery
- 12:00PM - 1:00PM Lunch
- 1:00PM - 5:00PM Surgery
- 5:00PM - 6:00PM Back to hotel
- 6:00PM - 8:00PM Dinner & Surgery case review

Day 3 Sunday

- 7:00AM - 8:00AM Breakfast
- 8:00AM - 9:00AM Introduction : Surgery Planning
- 9:00AM - 12:00AM Surgery
- 12:00PM - 1:00PM Lunch
- 1:00PM - 5:00PM Surgery
- 5:00PM - 6:00PM Back to hotel
- 6:00PM - 8:00PM Dinner & Surgery case review

Day 4 Monday

- 7:00AM - 8:00AM Breakfast
- 8:00AM - 9:00AM Introduction : Surgery Planning
- 9:00AM - 12:00AM Surgery
- 12:00PM - 1:00PM Lunch
- 1:00PM - 4:00PM Surgery
- 4:00PM - 5:00PM Back to hotel
- 5:00PM - 7:00PM Dinner & Surgery case review
- 7:00PM - 9:30PM Back at San Diego International Airport



San Diego
International Airport

Instructors



Jin Y. Kim, DDS, MPH, MS, FACD
GDIA Director



W. Eric Park, DDS
GDIA Mentor



Cameron Torabi, DDS
GDIA Mentor



Charles C. Park, DDS
GDIA Mentor

Registration form

COURSE	TUITION		QTY.	SUBTOTAL
	Member	Non-Member		
One-On-One Mentorship	\$19,000	\$25,000		
Live-Patient Surgery Training Course in Tijuana Mexico	\$8,500	\$10,500		
GDIA Symposium	\$395	\$695		
GDIA Pre-Symposium	\$1,800	\$1,800		
Annual GDIA Membership	\$295			

Grand Total: _____

Registration Information

Name: _____
 License No: _____
 Address: _____
 City: _____ State: _____ Zip Code: _____
 Phone: _____ Cellular Phone: _____
 Fax: _____ E-mail: _____
 Specialty: _____ Current Implant System: _____

Method of Payment

Please make check payable to Global Dental Implant Academy [GDIA] and mail to:



GLOBAL DENTAL IMPLANT ACADEMY

5455 Wilshire Blvd Ste. 950, Los Angeles, CA 90036
 Office: (323) 617-4141 Fax: (323) 617-4145

Card Type: ___ VISA ___ MASTER ___ AMEX **Total Credit Change: \$** _____
 Credit Card No.: _____
 Exp. Date : _____ Billing Zip Code : _____
 Signature : _____ Date : _____

*Refunds are granted only if a written cancellation notification is received at least 21 days before the course. 50% of the tuition minus processing fee will be refunded if cancellation occurs within 14 days before this course. No refund is granted afterwards. A \$75 fee is withheld for processing. For additional registrations, xerox and send.

The 4th DENTIS Global Implant Symposium

Organized by  GDIA

Save the Date!!!

September 14 & 15, 2013 (Saturday & Sunday)



“Seeking Realistic Solutions, Together...”

at Millenium Biltmore Hotel

506 S. Grand Ave. Los Angeles, CA 90071

Pre-Symposium Session

September 11 & 12, 2013 (Wed & Thu)

2-days Intensive Hands-on Course :

Hard Tissue Augmentation using Piezoelectric Bone Surgery

Instructor : **Professor D.S. Sohn, DDS, MSD, PhD**

Chair of OMFS at Catholic University Daegu, Korea

Former President of World Academy of Ultrasonic Piezoelectric Bone Surgery(WAUPS)

Former President of ICOI-Korea

Post-Symposium Workshop

September 15, 2013 Sun afternoon

Solutions to Achieve

the Implant Dream Team



MAIN PODIUM SPEAKERS TO INCLUDE :

CHARLES GOODACRE, DDS
TONY DAHER, DDS, MSED
JASON YAMADA, DDS, MS
JIN Y KIM, DDS, MPH, MS, FACD
JOSEPH CHOUKROUN, MD
ALDO VICARI, DDS
ROMAN SMUCLER, MD, DDS, PHD
MOHAMMAD KETABI, DDS
ALEX CHUNG, DDS
CARY BROWN, DDS
CAMERON TORABI, DDS
D.S. SOHN, DDS, MSD, PHD
AND MANY MORE...

www.GlobalImplantTraining.com

More information please contact us at (323) 617-4141