

The logo for XCEL SEMINARS is set against a dark brown background. It features a thick, yellow rope that forms a rectangular border with rounded corners. Inside this rope border is a yellow oval with a thin white outline. The text "XCEL SEMINARS" is centered within the oval in a bold, black, sans-serif font. The rope has a detailed braided texture and ends in frayed, knotted tips at the top and bottom.

XCEL SEMINARS



3rd Annual Comprehensive Dental Skills Series

The Knott's Berry Farm Resort Hotel

JAN. 29, 2012: THE ULTIMATE MATERIALS COURSE- ADHESIVES, COMPOSITES, LASERS AND MORE (LECTURE, INCLUDES A LASER DEMO)

Dr. George Freedman is Past President of the American Academy of Cosmetic Dentistry and a columnist on the latest dental materials for Dentistry Today Magazine.

MARCH 18, 2012: PEDIATRIC DENTISTRY FOR GP'S (LECTURE)

Dr. Fred Margolis is a pediatric dentist, an expert on pediatric care, lectures internationally and has been named a "Top Clinician in Continuing Education" by Dentistry Today Magazine.

APRIL 15, 2012: PREDICTABLE IMPLANT AESTHETICS (LECTURE)

Dr. Paresh Shah is an Executive Board Member of the Canadian Academy for Esthetic Dentistry and specializes in implants, esthetics and complex restorative treatments.

THE KNOTT'S BERRY FARM RESORT HOTEL

(Beach Blvd Exit off 5, 405 & 91 Fwys) - 7675 Crescent Avenue, Buena Park CA
All Courses are 8AM-4PM on Sundays & 7 CA CEs each

**\$139 per course or only \$299 for the
ENTIRE 3 COURSE SERIES (21 CA and AGD CEs)**

COURSE SERIES SPONSORED BY:



COURSE TOPICS

The Ultimate Materials Course: Dr. Freedman will discuss the latest dental techniques and materials, including how dental sensitivity can be totally eliminated and prevented: 7th and 5th generation adhesive materials, innovations in composites and matrix systems, and single step etch, bond and desensitization ♦ Minimally-invasive Fissurotomy burs – an anesthetic-free approach to caries restoration and repair ♦ Indirect procedures are simplified by easier to use, impression materials and one-step resin cements ♦ One-step post cementation and core build-up techniques ♦ Innovative carbide crown and bridge preparation (GW Ultra) with constant torque high speed electric handpieces. ♦ Predictable digital shade matching ♦ Photo-Activated Disinfection technology offers caries control and remineralization. ♦ Soft tissue lasers (demonstrated on hotdogs)

Pediatric Dentistry for GP's: Today's parents demand the best restorations of their children and teen's teeth for function and esthetics. Discussions will include: Glass ionomers, resinomers, composites, and various types of crowns ♦ Esthetic facings for stainless steel crowns and chairside/lab steps ♦ When space maintainers are indicated and the easy fabrication of removable and fixed appliances, including a reference chart of when space maintainers are indicated for each development stage ♦ Enamel microabrasion, direct-bonded and porcelain veneers for teenage patients ♦ Laser Dentistry – learn how to “numb” a tooth in 30 seconds, perform gingivectomies, frenectomies, fibroma excisions, crown lengthening and troughing for crowns and bridge with no shots ♦ Review of traumatic injuries and their treatments, including pulp therapies ♦ Invulsions, dislocations, avulsions and the Ellis Classification of injuries ♦ Radiographic techniques for hard and soft tissue injuries ♦ The protocol for reimplantation of permanent incisors, including splinting mechanisms ♦ The dark primary incisor and treatment of trauma to primary teeth.

Predictable Implant Aesthetics: Implant, abutment and final restoration selection all play a vital role to the success of implant treatment. This course covers proper impressioning techniques, lab communication, abutment selection, provisionalization, tissue management and prosthetic design ♦ Learn easy techniques to implement in your practice

REGISTRATION

TUITION	3 COURSE SERIES MEMBERSHIP	EACH INDIVIDUAL COURSE
More than 14 days before an event	Dentist: \$299, Staff: \$199	Dentist: \$139, Staff: \$119
Less than 14 days (Onsite Add \$20 fee)	Dentist: \$299, Staff: \$199	Dentist: \$159, Staff: \$139

Last Name _____ First Name _____ Email _____ Phone _____

Address _____ City _____ State _____ Zip _____

Cancellation Policy: Series registration is non-refundable. With written cancellation at least 14 days prior to a seminar, a credit will be issued for another course within the series. No refund or credit less than 14 days from an event.

Additional registrants _____ Course Dates: _____ Total Amount _____

Register online at www.xcelseminars.com

*Mail to: Xcel Seminars, PO Box 441745, Aurora, CO 80044
If you have any questions please call Erin at 310-663-4055*

Although Xcel Seminars does have sponsorship relationships with dental manufacturers and suppliers we are dedicated to providing only evidence-based information in our courses.



Approved PACE Program Provider FAGD/MAGD Credit Approval does not imply acceptance by a state or provincial board of dentistry or AGD endorsement. (10/01/11) to (9/30/2015)
We are a California Board Approved provider, permit #4536, Valid until 7/31/13

A decorative banner with a rope border and a central oval containing the text 'RUIZ DENTAL SEMINARS'. The rope is yellow with a black outline, and the central oval is yellow with a white outline. The background is a solid brown color.

RUIZ DENTAL SEMINARS



LOS ANGELES INSTITUTE of Clinical Dentistry &

RUIZ DENTAL SEMINARS

2012 Course *Mini* Catalog



Jose-Luis Ruiz, DDS

"Having had extensive training with Dr. Pete Dawson, I had a firm understanding of the causes of Occlusal Disease and the need for occlusal therapy. However, it was only after Dr. Ruiz's course that I felt I had all the information I needed to incorporate Occlusal Diagnosis and therapy into my practice."

– Dr. Cheryl Freeman, Asheboro, NC

"Every time I come to a course I become more motivated about dentistry in general and more knowledgeable"

– Dr. Danielle Samm-Plisky, Scottsdale, AZ

"I have taken several Implant courses and I learned more in 2 days about doing easy, predictable, Implant dentistry than any other course I have attended. Even better than a 4 month long Implant Course!"

– Charles Scholler, DDS, Somis, CA

Join Our Family, 1500 Dentists Strong and Growing

Learn from one of Dentistry's Most Popular Educators and a Real Practicing Clinician!!

UPCOMING WORKSHOPS

Learn How to Use Supra-gingival Dentistry When Doing Onlays and Full Crowns to avoid, Post-op Sensitivity, Retaking of Impressions, plus Inject Fun in to Dentistry.

JANUARY 20 & 21, 2012

Learn How to Make Posterior Composites Fast and Easy; Beautiful Anterior Composites and Even How to Rehabilitate a Full Mouth with Composite!

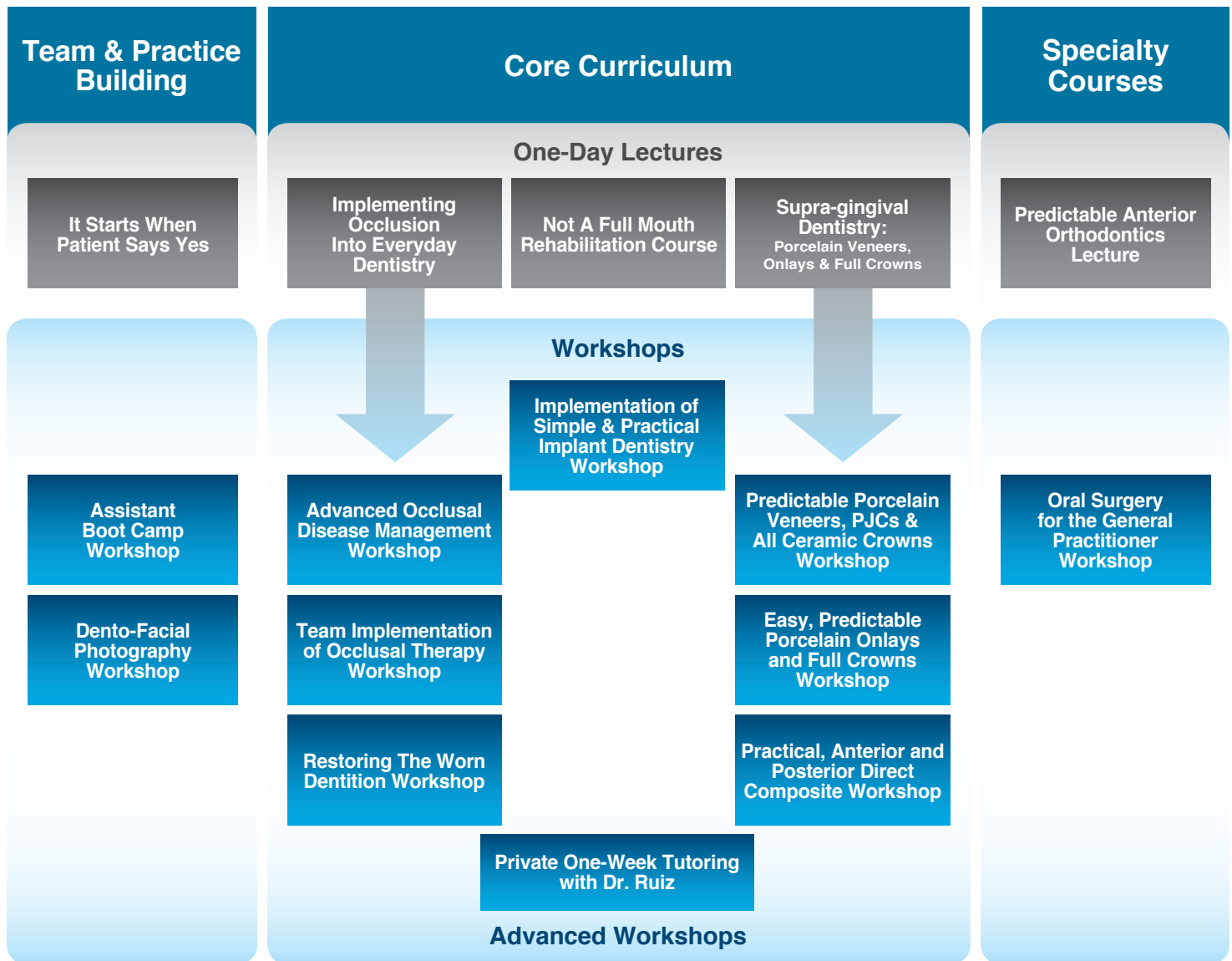
FEBRUARY 17 & 18, 2012

Learn How to Place an Implant in 3 Days, Using Narrow, Short and Mini-implants. This Will Immediately Increase Your Productivity up to 30%

MARCH 15-17, 2012



Our Curriculum



2012 Ruiz Dental Seminars Registration Policies

Upon receiving your registration, you will be emailed a confirmation with complete event information.

Payment Schedule:

Registration fees are to be paid in full at time of registration. Cancellations must be received in writing or e-mail. Cancellations made 30 days prior course will receive a full refund; two weeks prior will receive a 50% refund. Any cancellation within 2 weeks will receive 50% credit for future courses. No-shows are not eligible for any refund.

Course Retakes

Participants are allowed to retake any lecture or workshop a second time at 50% discounted rate.

Special Rates:

- ◆ Current Dental Students (with student ID) or Recent Graduates Rates (within 2 years of graduation) can attend any 7-hour lecture or workshop at 50% discount (Not Including Specialty Courses).
- ◆ Refer a NEW participant and receive 50% off any lecture or workshop you attend together.

Call **818-729-9121** to reserve your seat or visit www.RuizDentalSeminars.com

NOT a Full Mouth Rehabilitation Course

Treating the Full Mouth Case with Much Less Than a Full Mouth...Opening VDO Using Direct Composite, Adhesive Dentistry and Limited Implants & PRD

1 Day Lecture • 7 CE Hours



Every practice has 5% to 15% of patients who are missing multiple teeth and need a full mouth rehabilitation but cannot afford it, and we see them suffer and deteriorate feeling helpless. An even larger number of our patients would greatly benefit by opening their Vertical Dimension of Occlusion (VDO) to restore their worn-out dentition. They need help!

In this practical lecture Dr. Ruiz will offer a more real world approach to treating these patients using direct composite, adhesive dentistry and limited implants. Even partial mouth rehabilitation cases are like remodeling a beautiful building, meticulous designed and diagnosis must be done before the first scoop of dirt is ever removed, (or before a handpiece touches the tooth). This fast pace course will cover, techniques for full mouth composite restorations, Implant supported PRD using narrow and short implants and occlusal considerations, as well as research and many clinical cases.



Learning Objectives:

- ◆ Learning techniques for proper adhesion and full composite rehabilitations.
- ◆ Identify the principle of form, texture and color necessary to perform beautiful composite restorations.
- ◆ Understand how to record patients' unique esthetic perspective and goals and how to blend it with our own.
- ◆ How to implement occlusal treatment into an overall oral treatment.
- ◆ The symptoms of occlusal disease.
- ◆ When to use a semi-adjustable articulator and why it has great importance.
- ◆ When to use a CR bite.
- ◆ How to educate patients about occlusal disease, for excellent treatment acceptance.
- ◆ How to choose between regular, narrow and mini-implants.
- ◆ Step by step techniques, and much, much more...



Schedule:

January 13	Los Angeles, CA
January 27	Austin, TX
June 29	Chicago, IL
July 13	San Francisco, CA
September 9	Orange County, CA

\$299 or \$199 for early registration (30 days prior to event)

Call 818-729-9121 to reserve your seat or visit www.RuizDentalSeminars.com

Easy, Predictable Porcelain Onlays Full Crowns, etc. Using Supra-gingival Dentistry Principles WORKSHOP

2 Day Workshop • 14 CE Hours



“Since taking the supra-gingival workshop, fixed prosthetics has truly become simplified and much more predictable than ever before... Preps, impressions & cementation are easier, cleaner and more predictable ...If you are looking for a course that truly improves the way you do dentistry with the utmost efficiency I cannot recommend any other course over supragingival dentistry”

– Dr. Ali Sheikholislam
Sacramento, CA

In this practical workshop, Dr. Ruiz will first demonstrate on a live patient, a new paradigm in preparation and cementation for porcelain onlays. Dr. Ruiz will show step-by-step how using “Supra-gingival Dentistry” techniques and understanding the specific characteristics of these new materials, dentistry can become easier and more predictable than ever. He will show step-by-step, the techniques and principles for tooth preparation, temporization, and sensitive-free easily bonded cementation.

During the workshop, participants will perform many tooth preparations specific to Supra-gingival dentistry for non-metal onlays, and full crowns in very realistic simulators, using the techniques and information learned. Participants will also bond porcelain onlays using the techniques learned.

Learning objectives for this live patient workshop:

- ◆ Understand the benefits of Supra-gingival dentistry by observing a live procedure and performing, onlay and crown preparations on a very realistic simulator.
- ◆ Understand and perform simple, predictable impression techniques.
- ◆ Learn how to choose the correct type of restorative material and translucency that will allow for Supra-gingival dentistry.
- ◆ Participants choose which bonding systems and cements are most esthetically appropriate to achieve good margin blending and allow for Supra-gingival dentistry.
- ◆ Understand and perform sensitive-free and easy cementation techniques specific to posterior onlays.
- ◆ Participants will learn and perform, margin elevation, and enamel preservation techniques.
- ◆ And much, much more...

Schedule

January 20 & 21 Los Angeles, CA
August 10 & 11 Los Angeles, CA

\$1490 or \$1,290 for early registration (30 days prior to event)
Assistants \$450



Call 818-729-9121 to reserve your seat or visit www.RuizDentalSeminars.com

Practical, Predictable and Beautiful Direct Anterior and Posterior Composite Restorations; Including Full Mouth Composite Rehabilitation

Including Full Mouth Composite Rehabilitation

2 Day Workshop • 14 CE Hours



Direct composite restorations is today's bread and butter dentistry, being efficient, predictable is a must for any practicing clinician. Additionally, direct composites provide functional, long lasting, and esthetically pleasing results, in the most conservative fashion. Many complain that direct anterior and posterior composites can be technique sensitive, difficult, time consuming and often financially unrewarding procedures; this may be due in large part due to the incorrect use of new materials. These materials require a completely new approach, if we are going to be successful with them. Dr. Ruiz will present a completely new, scientifically based, approach to preparing and placing highly esthetic, practical and predictable anterior and posterior direct composites, including full mouth composite rehabilitation.

In this practical workshop you will use the newly learned techniques and perform many restorations on a realistic typodont.

Learning Objectives:

- ◆ Learn and perform predictable techniques for posterior composite restoration placement.
- ◆ Identify the different types of composites resins and their appropriate use.
- ◆ Identify and use "correctly" the latest in bonding systems.
- ◆ Identify and put in to practice principle of form, texture and color necessary to perform beautiful composite restorations.
- ◆ Recognize when and how to use opaquers, modifiers, and tints.
- ◆ Describe the latest in finishing and polishing techniques.
- ◆ Use the different matrix system and know when to use them.
- ◆ Learn the principles and rational on when and how to do a full mouth rehabilitation with direct composite.



Schedule

February 17 & 18 Los Angeles, CA
July 20 & 21 Los Angeles, CA

\$1,490 or \$1,290 for early registration (30 days prior to event)

Call 818-729-9121 to reserve your seat or visit www.RuizDentalSeminars.com

Evidence-Based Implementation of Simple & Practical Implant Dentistry

Using Short, Narrow, Platform and Mini Implants, for the General Dentist

3 Day Workshop • 21 CE Hours

Faculty: Dr. Jose-Luis Ruiz & Dr. Raffi Margossian

"I have taken several Implant courses and I learned more in 2 days about doing easy, predictable, Implant dentistry than any other course I have attended. Even better than a 4 month long Implant Course!"

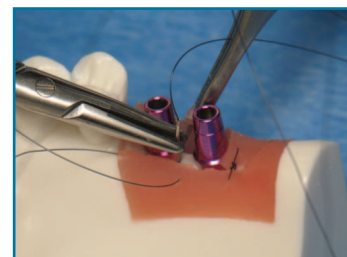
- Charles Scholler, DDS, Somis, CA

"Definitely comprehensive enough to do the simple, easy cases. This met my course objective! Well organized syllabus notes."

- Dr. Ron Chess, Encino, CA

Yes! With this course, you will be ready to place and restore simple implants in 3 days! 60+% of cases are simple and you should be placing them on Monday! Stop wasting valuable time and money with expensive courses, which teach unpredictable bone grafting techniques and unnecessary tests for simple implants. Learn the "Logical Approach to Implant Dentistry"

Patients today are no longer willing to have their teeth sanded down for fix bridges; implant dentistry is here to stay. The demand for implants is growing exponentially...it is the fastest growth area in dentistry. It is clear that implant dentistry is not the domain of specialists, the demand is too great. Similar to extracting teeth, GPs and restorative dentists should perform the majority of implant procedures and refer the difficult cases to the specialist.



In this practical workshop Dr. Ruiz will present the most logical system to select, place and restore simple implants in normal to narrow bone. These techniques can be implemented on Monday, and are in accordance with provisions placed by the 2010 Guidelines of the Academy of Osseointegration. Dr. Ruiz will also explain how to avoid unsatisfactory results. Placing and restoring implants in normal to narrow bone without bone grafting is an indispensable skill, which will increase your bottom line at least 20 to 30% each year.

- Did you know that research shows that implant failure in bone augmented ridges is a staggering 7.5% before loading and 11.3% during the first 5 years of function. (Froum SJ, Dental Implant Complications. 2010 Wiley-Blackwell. Chapter 6; Page 112)
- And research show that success with narrow and shorter (10mm) implants on natural bone, even with some angulations is highly successful!
- Stop Learning Difficult, Unpredictable Techniques! Learn To Place Implants in 3 days By Using the "Logical Approach"

Learning Objectives:

- ◆ 2010 provisions of the Academy of Osseointegration.
- ◆ How to choose between regular, narrow and mini-implants.
- ◆ Perform 4 simulated, yet realistic implant placements, using a correct surgical protocol.
- ◆ Perform 4 simplest and predictable restorative procedures!
- ◆ What x-rays and records are really necessary?
- ◆ When and how to use surgical templates.
- ◆ Simple surgical procedures to insure safe and predictable results.
- ◆ When is better to refer...
- ◆ Detailed equipment and supplies list will be provided for immediate implementation.
- ◆ Assistants are encouraged to attend to help implement systems.
- ◆ A system to keep implant parts costs down! Charge less to patients and have higher profits.



Schedule

March 15 – 17 Los Angeles, CA

September 13 – 15 Los Angeles, CA

\$2,490 or \$2,290 for early registration (30 days prior to event)

Assistants \$450

Call 818-729-9121 to reserve your seat or visit www.RuizDentalSeminars.com

Specialty Courses



Predictable Anterior Orthodontics... (Fundamentals of Tooth Movement) • One Day Intro Seminar

1 Day Lecture • 7 CE Hours
Faculty: Dr. Ralph Nicassio

Performing simple anterior orthodontics will improve the quality of care provided to patients, as well as increase practice revenue. Independently of which orthodontic systems are used to move teeth, a good understanding of the fundamental of tooth movement and orthodontics will help achieve the best results. Dr. Nicassio's vast experience teaching orthodontics will help make this complex subject easy. He will discuss in detail the fundamental of tooth movement and orthodontics using straight wire technique. Dr. Ruiz will discuss proper use of different clear aligner systems, including Invisalign & Clear Correct.



Schedule

February 24 Los Angeles, CA

\$299 or \$199 for early registration (30 days prior to event)

Team and Practice Building

Assistant Boot Camp

2 Day Workshop for Assistants and Dentists • 14 CE Hours
Faculty: Dr. Jose-Luis Ruiz & Dr. Luis Vargas

Experience shows that a motivated and qualified dental assistant is very valuable to any dental practice and can increase productivity and the enjoyment of dentistry. In this highly practical workshop, your assistant will be educated and motivated.

At the end of this workshop your assistant will:

- ◆ Learn how to make beautiful provisionals for veneers and onlays.
- ◆ Learn principles of communication and education to improve treatment acceptance.
- ◆ Learn specific techniques to assist for adhesive dentistry procedures.
- ◆ Learn specific techniques to assist for occlusal therapy and how to take occlusal records.
- ◆ And much more...

Schedule

April 6 & 7 Los Angeles, CA
October 19 & 20 Los Angeles, CA

\$690 Assistants and Dentists (\$590 early registration)



Predictable Success with Porcelain Veneers, PJs & All Ceramic Crowns Using Supra-gingival Dentistry Principles WORKSHOP

Easy, Predictable Porcelain Veneers, PJs & All Ceramic Crowns

3 Day Course • Live Patient Demonstration & Workshop • 21 CE Hours



Porcelain veneers when performed correctly can yield exquisitely beautiful results with minimal tooth preparation and no negative side effect; thus bringing great joy to both patients and clinician. However, if performed incorrectly, it can easily become a destructive, unpredictable and often unsuccessful procedure. This may be the reason why full crowns are more popular. Achieving consistent patient satisfaction requires more than good restorative principles, it also requires excellent communication with the patient, to understand their unique esthetic perspective and goals and then implement a system, to record this information and blend it with our own esthetic preferences and goals. It is also of great important to consider the longevity of our restorations, which always involves occlusal management.

It is thus evident that achieving great results with porcelain veneers and PJs require the thorough understanding of restorative principles, dental materials, smile design and occlusion. Dr. Ruiz will present his practical, logical and scientifically based approach to incorporating all of this important component in to an easy logical and highly predictable system which will virtually guarantee excellent results and patient satisfaction every time.

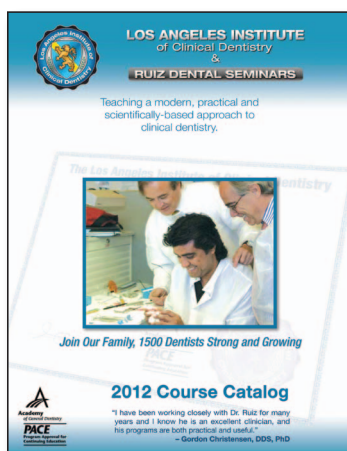
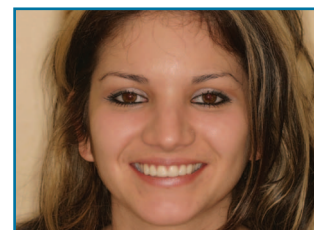
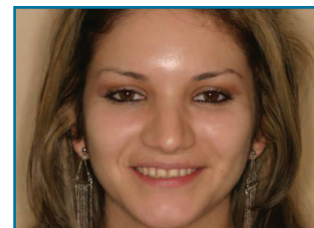
Schedule

May 10 - 12 Los Angeles, CA
December 6 - 8 Los Angeles, CA

\$1,990 or \$1,790 for early registration (30 days prior to event)

Workshop Objectives:

- ◆ Understand how to record patients' unique esthetic perspective and goals and how to blend it with our own, and perform a smile design.
- ◆ Prepare and cement several veneers using learned techniques.
- ◆ Understand how proper diagnosis and smile design dictates proper tooth preparation and restorative material selection.
- ◆ Learn and perform easy and predictable techniques for temporization.
- ◆ Adjust the occlusion after porcelain veneers or JVCs and their relationship with longevity.
- ◆ What restorative materials and porcelains to use for long term stability?
- ◆ What bonding systems and techniques will yield better longevity and low sensitivity?
- ◆ Step by step techniques, and much, much more...



FOR FULL LIST OF OUR LECTURES/ WORKSHOPS GET YOUR NEW 2012 CATALOG

TEACHING A MODERN, PRACTICAL AND SCIENTIFICALLY-BASED APPROACH TO CLINICAL DENTISTRY.

TO RECEIVE A CATALOG IN THE MAIL, CALL:
(818) 729-9121

OR DOWNLOAD ONLINE AT:
WWW.RUIZDENTALSEMINARS.COM

Call 818-729-9121 to reserve your seat or visit www.RuizDentalSeminars.com

The logo consists of a thick, braided yellow rope with black outlines, forming a rectangular border with rounded corners. At the top center, the rope is knotted. In the center of the rope border is a yellow oval with a white outline. Inside this oval, the text "PUNJABI DENTAL SOCIETY" is written in a bold, black, sans-serif font.

PUNJABI DENTAL SOCIETY

**Find us on
Facebook**



**AN AWARD WINNER INTERNATIONAL ORGANIZATION
PROMOTING EXCELLENCE IN DENTAL EDUCATION
Over 2500 Members Strong**

Presents

A Must attend seminar for you and your staff

**CALIFORNIA DENTAL PRACTICE ACT.
INFECTION CONTROL & RISK MANAGEMENT
BY**

ATT. PATRICK J. WOOD, RODNEY M. STINE, GAIL E. HARRIS

**On
JAN. 29th, 2012 (Sunday) 9:00 am till 5:00 pm
(CA Board 7 hrs C.E. units)
at**

**QUIET CANNON
901 VIA SAN CLEMENTE, MONTEBELLO, CA 90640**

(Please print in capital letters or attach your business card)

Name DR/RDH/RDA/DA _____ Lic no _____
Circle one First Middle Initial Last

Address _____

City _____ State _____ Zip _____
Phone no _____ Fax no _____ e-mail _____

ARE YOU A PDS MEMBER YES NO Membership no _____

COMPLIMENTARY BREAKFAST, LUNCH & PARKING INCLUDED

REGISTRATION FEE	Before Jan 22, 2012	After Jan 23, 2012
Dentists Non-members	\$89.00	\$99.00
Members	\$79.00	\$89.00
Hygienist/R.D.A. Non-members	\$69.00	\$79.00
Members	\$59.00	\$69.00

**FOR REGISTRATION
CALL TOLL FREE 1-866-422-5573 (1-866-4-CALL-PDS) OR 909-933-9076
TO REGISTER ONLINE VISIT US ON WWW.PDSOCIETY.COM**

**Dr. R. Salwan
President**

Make check payable to
PDS
815 W. HOLT BLVD. STE #402 ONTARIO, CA 91762

**Dr. D.P. Singh Nagra
Chairman**

Att. Patrick J. Wood

Patrick J. Wood has been representing dentists for over twenty years in all of their business transactional needs. The law firm he founded, Wood & Delgado, handles dental practice sales, lease reviews, associate ships, partnerships, Dental Board defense and related legal needs of dentists in California. He has extensive lecturing experience at dental societies, CDA conventions, Practice Valuation Study Group (a national dental practice broker coalition) and at California dental schools. He has also written many articles on the business side of dentistry, which articles appeared in such dental industry magazines as Dental Economics, Journal of California Dental Association, Journal of Colorado Dental Association, and Strategies for Success. He is a continuing education provider with the California Dental Board.

California Dental Practice Act & Risk Management:

- Practical application of the Dental Practice Act
- Legal Agreements – Are you in violation?
- Common Dental Board litigation – A Case study
- Business issues related to the Dental Practice Act
- Drugs – Proper versus improper prescription protocol
- Dental Records – A dentist's ongoing liability
- Marketing your dental Practice
- Dental Procedures/Surgery – Duty to supervise licensed professionals
- Other practical topics relating to the practice of dentistry

Rodney M. Stine Infection Control

Mr. Stine has served as Director of Dental Affairs with California Dental Association. He was responsible for management of Regulatory Affairs and Membership Department. He also served as liaison between CDA and Board of Dental Examiners and other regulatory agencies. Mr. Stine reviewed and managed hazard communication requirements with Cal-OSHA, California Department of Health Services. He also served as Executive officer on Board of Dental Examiners.

Gail E. Harris Sr. Clinical Risk Management Consultant

At Medical Protective we bring a wealth of clinical risk management industry experience to the table including a team of seasoned professionals that average over 25 years in the industry. These professionals help our doctors proactively meet risk management challenges each day. Our long-term customers stay with us, because they recognize that we're committed, not just to defending them in court, but keeping them from ever seeing a courtroom .Gail E. Harris, RN, MS, CPHRM, Sr. Clinical Risk Management Consultant, combines a wealth of education and consulting experience with her strong clinical background--with special emphasis on the areas of corporate risk management, infection control, and adult education.