

The logo is set against a solid brown background. It features a thick, yellow rope with a black outline that forms a rectangular border with rounded corners. At the top center of this border, the rope is knotted. In the center of the rope frame is a large, horizontal, yellow oval with a thin white outline. Inside this oval, the words "FITZPATRICK DENTAL" are written in a bold, black, sans-serif, all-caps font.

**FITZPATRICK DENTAL**

Planmeca 3D Digital



# FITZPATRICK DENTAL

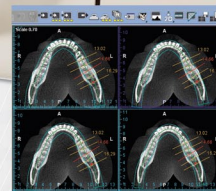
Southern California's Premier Equipment Dealer  
(800) 376-8582 · (805) 532-1870



A-dec Operatory Equipment



Gendex 3D Pan-X



Vatech I/O Sensors

**There's still time for big tax savings! Call today!**

A-DEC PLANMECA VATECH GENDEX • MORE



# FITZPATRICK

DENTAL

Southern California's Premier Equipment Dealer

There's still time for big tax savings! New, increased deductions under Section 179 for 2011!

Purchase equipment before the end of the year, and write off up to \$500,000!\*

- Express Loan Application up to \$200,000. Financing for expansions, remodels, debt consolidation & startups.
- Replace outdated equipment, add new technology or build your dream office.
- Premier equipment by leading manufacturers.
- Award-winning office planning & design services.
- Large or small projects, from new office buildouts to simple updating of equipment or technology.
- Factory authorized service by trained technicians.
- Two convenient locations—Moorpark & Irvine.
- Don't wait--call the professionals at Fitzpatrick today!



COME SEE FOR YOURSELF WHAT PEOPLE ARE TALKING ABOUT...

800.376.8582 · 805.532.1870 · [fitzpatrickdental.com](http://fitzpatrickdental.com)

\*Consult your CPA for IRS details