

The logo features the text "XCEL SEMINARS" in a bold, black, sans-serif font, centered within a yellow oval. This oval is framed by a thick, yellow rope with a black outline, which is coiled into a rectangular shape with rounded corners. The rope has frayed ends at the top. The entire design is set against a solid brown background.

# **XCEL SEMINARS**



# 12th Annual Comprehensive Dental Skills Series

Knott's Berry Farm Resort Hotel

**Dec. 17, 2017: Updates in Pediatric Dentistry: Treating Tiny Tots to Teens** *Dr. Lance Kisby has practiced & taught for 35 years, started two pedo residency programs and edited the Journal of Pediatric Dentistry.*

**Jan. 28, 2018: Breaking The Dental Life Cycle With Minimally Invasive Advanced Adhesion Dentistry** *Dr. Joseph Willardsen is nationally renowned cosmetic dentist & lecturer. His training and outstanding results are shown as the featured dentist on NBC's hit show "The Doctors."*

**Feb. 18: Comprehensive Introduction to Dental Sleep Apnea (8AM-5PM and 8 CE Units)** *Dr. Rob Veis has been practicing for almost 30 years, was a professor at USC for 12 years and lectures nationally on restorative dentistry and appliance therapy.*

**Feb. 25: Smile Design & Ceramics: Making the Best Choice for Beauty and Strength** *Dr. Susan McMahon runs the largest cosmetic dental practice in Western Pennsylvania, is a fellow in the International Academy of Dental-Facial Esthetics and noted lecturer.*

**Knott's Berry Farm Resort Hotel, 7675 Crescent Ave, Buena Park, CA**  
(Beach Blvd. exit of the 5, 405 & 91 Fwys)

**ALL COURSES ARE ON SUNDAYS (8AM-4PM) AND 7 CA CEs EACH**

**\$149 PER LECTURE, \$299 FOR  
THE 8CE INTRO TO SLEEP APNEA  
OR THE ENTIRE 4 COURSE SERIES  
(29 CA & AGD CEs) FOR ONLY \$499!**

COURSE SERIES  
SPONSORED BY:

**kuraray**



**Dentsply  
Sirona**  
Academy



## COURSE TOPICS

**Updates in Pediatric Dentistry:** *This course features a comprehensive update in Pediatric Dentistry, including:* New psychological insights and research on Behavior Guidance, the dental implications for the increase in Autism, preterm births ♦ ADHD caries formation and prevention as well as how to perform a CAMBRA caries risk assessment ♦ How using Xylitol, Fluoride Varnish, MI Paste, Chlorhexadine, and sealants are effective preventive measures ♦ Indirect Pulp Caps and MTA/Biodentine pulpotomies. ♦ New designs in tooth preparation & when to use GIC, RMGI's, and a new flowable composite for Class I to Class V preps ♦ Diagnosis and treatment of simple and complex traumatic injuries in addition to a simple method for splinting.

**Minimally Invasive Adhesion Dentistry:** *It is now possible to mimic the natural bond strength of the DEJ with certain techniques and materials. This level of adhesion enables the clinician to restore severely broken-down teeth with direct, low-stress, composite build-ups & onlays in lieu of full-coverage restorations. This lecture will review some of these techniques, materials and key research to perform advanced adhesion, including:* How to seal restorations & dramatically increase bond strengths prior to impressions & temporaries ♦ Layer composites with low-stress & double dentin bond strengths ♦ Identify & treat dentin cracks ♦ Virtually eliminate post-operative sensitivity ♦ How & when to place fibers in composites ♦ How to discuss advanced techniques with patients

**Intro to Dental Sleep Medicine (8 CE Units):** *This course is intended to provide a comprehensive overview of diagnosis and treatment of sleep apnea cases for dentists interested in adding this growth area to their practices. Dr. Veis will cover all aspects diagnosis and the sleep study, deciding which appliances to use for treatment, measuring and fitting the appliances, interacting with the fabricating lab, and how to manage the billings to medical insurance, including:* Introduction to sleep stages, disorders and why there is a need for treatment? ♦ Sleep apnea signs/symptoms/clinical issues and treating sleep apnea via dental appliance protocol review ♦ Services to do and read sleep tests ♦ Overview of Appliances - pro's and con's of all of the major sleep appliances ♦ Model analysis, mixed dentition and how to take construction bites for making certain appliances ♦ Group work on an actual case and diagnosing appliance ♦ Services to fully take care of the medical billing for these services

**Smile Design & Ceramics:** Case selection, tooth prep, material choice and then proper bonding techniques will be presented in a practical manner. Smile Design principles will be covered including rational for new practical principles that result in pleasing natural-looking smiles. Many cosmetic cases will be presented for a variety of techniques using indirect restorations. We will go from treatment planning all the way through insertion with step by step instruction for conservative and more complex cases

TUITION	4 COURSES	EACH INDIVIDUAL COURSE
More than 14 days before an event	Dentist: \$499, Staff: \$349	Dentist: \$149, Staff: \$119 Intro to Sleep Apnea - Dentist: \$299 Staff: \$199
Less than 14 days before an event	Dentist: \$519, Staff: \$369	Dentist: \$169, Staff: \$139 Intro to Sleep Apnea - Dentist: \$319 Staff: \$219

Fees include continental breakfast, CE credits and free hotel parking. Registration is at 7:30am, courses are 8am-3:30pm. It is an extra \$20 fee for all onsite and walk-in registrations.

Last Name \_\_\_\_\_ First Name \_\_\_\_\_ Email \_\_\_\_\_ Phone \_\_\_\_\_

Address \_\_\_\_\_ City \_\_\_\_\_ State \_\_\_\_\_ Zip \_\_\_\_\_

**Cancellation Policy:** Series registration is non-refundable. For individual courses, with written cancellation at least 14 days prior to a seminar, a refund will be issued less a \$50 cancellation fee. No refund or credit less than 14 days from an event.

Additional registrants \_\_\_\_\_ Course Dates: \_\_\_\_\_ Total Amount \_\_\_\_\_

**Register online at [www.xcelseminars.com](http://www.xcelseminars.com)**

Mail checks: Xcel Seminars, PO Box 441745, Aurora, CO 80044 • If you have any questions please call Erin at 310-663-4055 • Fax: (866) 332-5891

Although Xcel Seminars does have sponsorship relationships with dental manufacturers and suppliers, we are dedicated to providing only evidence-based information in our courses.



Approved PACE Program Provider FAGD/MAGD Credit Approval does not imply acceptance by a state or provincial board of dentistry or AGD endorsement. (10/01/15) to (09/30/2019) We are a California Board Approved provider, permit #4536.

The logo features a thick, yellow rope with a black outline, coiled into a rectangular frame with rounded corners. The rope has a detailed three-strand braid pattern. In the center of the frame is a horizontal yellow oval with a thin white border. Inside this oval, the words "PEARSON DENTAL" are written in a bold, black, sans-serif font. The background of the entire image is a solid brown color.

**PEARSON DENTAL**

## SUNI 3D CBCT W/CEPH

- Super Bite Wing Function
- Full FMX Mode
- 5 Year Warranty
- Q3D Operation Software
- Q3D Imaging Software
- 4x5 to **16x14** FOV
- 75  $\mu$ m
- 0.5mm Focal Spot
- 5 ° Target Angle
- 60 to 90 kV Tube Voltage
- 40 to 12 mA Tube Current
- 110v/120v, 50/60 Hz Line Voltage
- 9 to 17 sec Panoramic Exposure Time
- 7.7/14.5 CT Exposure Time



5 LEFT AT THIS PRICE

suni

STARTING  
\$995/Mo. + tax

## HYPERION X5 3D CBCT

- Easy 3D/2D Diagnostics
- IRYS Imaging Software
- 10x10 FOV
- 2' x 2' Footprint
- 80  $\mu$ m Voxel Size
- SMART (Streak Metal Artifacts Reduction Technology)
- Adult/Child Pan
- Morphology Recognition Technology
- Dentition, Bitewing, & Maxillary Sinus
- Installation, Training, & Support



4 LEFT AT THIS PRICE

myray

\$59,995.00

\*PRICING MAY CHANGE WITHOUT NOTICE

## J. MORITA 3D CBCT W/CEPH

- **5 Year Parts and Labor Warranty**
- 4x4 to 10x8 FOV
- New 3D Reuleaux Full Arch FOV Offers Full Arch Scan
- Seven Pre-Programmed Panoramic Functions with Magnification Options
- Super High Resolution: 125  $\mu$ m (micrometer) Fine Voxel



2 LEFT AT THIS PRICE

MORITA

STARTING  
\$895/Mo. + tax

## HYPERION X9 3D CBCT W/CEPH



5 LEFT AT THIS PRICE

Ask About  
11x13 FOV Upgrade!

myray

3  
in1

- 11x8 FOV
- IRYS Imaging Software
- Installation, Training, & Support
- 75  $\mu$ m Voxel
- Morphology Recognition Technology
- Adult/Child Pan
- Dentition, Bitewing, & Maxillary Sinus

STARTING  
\$895/Mo. + tax



# PearsonDental

(800) 474-2299 | [www.pearsondental.com](http://www.pearsondental.com)

**SAME DAY  
CROWNS!**

## OPERATORY CHAIR PACKAGES

### R7 INTERNATIONAL



- Anthos R7 Chair
- Venus Plus-L LED Light
- Assistant's Vac Pack
- Anthos R7 Unit
- Smart Touch Display

**ASK ABOUT  
25% OFF SPECIAL  
PRICING!**

### ANTHOS DRR090 PACKAGE



- Anthos A7 Dental Chair
- DRR090 Delivery System
- Belmont 501 Clesta Unit Mount Light

**\$9,995.00**

### QUOLIS 5000 PACKAGE



- Belmont Quolis 5000 Dental Chair
- Quolis or Evogue Delivery Unit w/Rear Vac Pkg
- Bel Halo or Clesta LED Light

**STARTING  
\$14,995.00**

### MARUS NUSTAR DENTAL CHAIR



**\$3,750.00**

## NSK STANDARD/MINI HANDPIECES

### NSK SLOW SPEED KIT



NSK Pana-Max PLUS



NSK Pana-Max STANDARD

**\$296.00**

NET PRICE

**\$230.00**

NET PRICE



Model NAC-EC



Model EX-204



Model EX-6B

**Buy 4  
Get 1  
Free**

**\$420.00  
NET PRICE**

\*PRICING MAY CHANGE WITHOUT NOTICE

[www.pearsondental.com](http://www.pearsondental.com)

ALL PRICING INCLUDES INSTALLATION, TRAINING, & SUPPORT

**NEW OFFICE  
SPECIALS!**

## NEW OFFICE

## COMPLETE PACKAGE

- 3 Belmont/DRR090/Ciesta LED Operatories
- 3 Dr./Asst. Stool Set
- 1 Progeny Preva DC X-Rayt
- 1 Midmark M9 Sterilizer
- 1 Airstar 22 Compressor
- 1 Vacstar 20 Vacuum
- 1 Tsunami Ultrasonic Cleaner

**\$39,995.00**



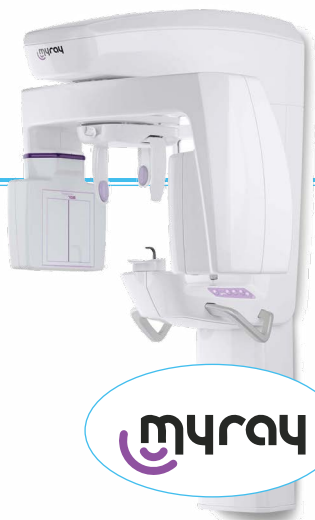
OPTIONAL EVOGUE PACKAGE PICTURED

## TECHNOLOGY

## PACKAGE

- MyRay X5 3D CBCT 10x10 FOV
- CLIO Size 1 & 2 Digital Sensor
- ClioSoft Imaging Software
- Claris Intraoral Camera
- Training

**\$61,995.00**



myray



## PREMIUM TECHNOLOGY

## PACKAGE

- SUNI IQ 3D CBCT PAN CEPH 16x14 FOV
- SuniRay 1 & 2 Sensor
- Prof. SUNI Software (5 Lic)
- SuniCam HD Intraoral Camera
- Training

**\$88,995.00**



suni



**END OF 2017  
BLOWOUT!**

## CAD/CAM SPECIALS

### E-MAX WET MILL PACKAGE

- Roland DWX-4W
- Exocad
- Porcelain Furnace
- PC
- Compressor
- 3M Scanner
- Training
- Includes **FREE** MoonRay D100 3D Printer

**\$59,995.00**

### HYBRID CERAMIC/ZIRCONIA DRY MILL PACKAGE

- Roland DWX-4
- Exocad/Exocam
- PC
- Dust Collector
- 3M Scanner
- Training
- Includes **FREE** MoonRay D100 3D Printer

**\$45,995.00**

#### DWX-4



**Roland®**

#### PC



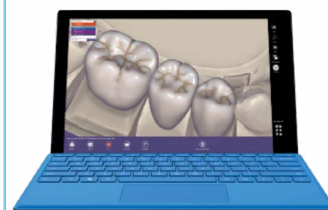
Digital Healthcare  
Computers

#### D-100



**MoonRAY S**

#### SOFTWARE



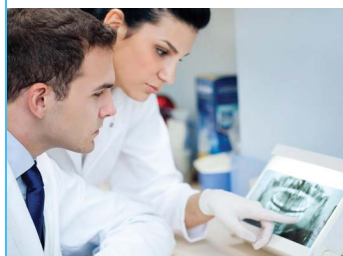
**exocad**

#### SCANNER



**3M** Science.  
Applied to Life.™

#### TRAINING



**Pearson**

#### DUST COLLECTOR



**QUATRO**  
AIR TECHNOLOGIES INC.

#### DWX-4W



**Roland®**