

A decorative border made of thick, yellow, braided rope with dark outlines, forming a rectangular frame with rounded corners. The rope is knotted at the top center and bottom center.

XCEL SEMINARS



12th Annual Comprehensive Dental Skills Series

Knott's Berry Farm Resort Hotel

Aug. 20, 2017: Dental Management of Patients with Common Medical Conditions *Dr. Patrick Quaranta* us back by popular demand for a new subject! He is a former professor of Oral Medicine at UMD-NJ-New Jersey Dental School.

Sep. 24: The Four Quarters of the Root Canal Game: Become More Effective, Efficient and Excellent in Endodontics! *Dr. Reid Pullen* was a general dentist in the Army before becoming an Endodontist and is uniquely suited to teach GPs about Endodontic care.

Oct 22: OSHA, Infection Control & the California Dental Practice Act PLUS a Bonus Course - The New Economics of Dentistry! *Pat Wood*, Partner at Wood & Delgado is an expert on the Dental Practice Act and Dental Transitions. *Noel Brandon-Kelsch, RDH*, uses her unique humor and cutting edge information to present tough subject matter in an interesting way. She is the infection control columnist for RDH magazine, a syndicated newspaper columnist and has been featured on Disney Radio & ESPN.

Dec. 17: Updates in Pediatric Dentistry: Treating Tiny Tots to Teens *Dr. Lance Kisby* has practiced & taught for 35 years, started two pedo residency programs and edited the Journal of Pediatric Dentistry.

Jan. 28, 2018 Breaking The Dental Life Cycle With Minimally Invasive Advanced Adhesion Dentistry *Dr. Joseph Willardsen* is nationally renowned cosmetic dentist & lecturer. His training and outstanding results are shown as the featured dentist on NBC's hit show "The Doctors."

Feb. 25: Smile Design & Ceramics: Making the Best Choice for Beauty and Strength *Dr. Susan McMahon* runs the largest cosmetic dental practice in Western Pennsylvania, is a fellow in the International Academy of Dental-Facial Esthetics and noted lecturer.

Knott's Berry Farm Resort Hotel, 7675 Crescent Ave, Buena Park, CA
(Beach Blvd. exit of the 5, 405 & 91 Fwys)

ALL COURSES ARE ON SUNDAYS (8AM-4PM) AND 7 CA CEs EACH
\$149 PER LECTURE OR THE ENTIRE
6 COURSE SERIES (42 CA & AGD CEs)
FOR ONLY \$549!

BONUS
HANDS-ON
COURSE:
ONLY
\$249

Dec. 3: Hands-on Interceptive Orthodontics for Children: The How and Why
Dr. Rob Veis has been practicing for almost 30 years, was a professor at USC for 12 years and lectures nationally on restorative dentistry and appliance therapy.

COURSE SERIES
SPONSORED BY:

kuraray



Dentsply
Sirona
Academy

'GC'

COURSE TOPICS

Managing Common Medical Conditions: *Advances in medical technology and pharmaceuticals have enabled patients who hitherto were treated only in hospital based dental clinics, to seek care at our private dental practices. Also, the "baby-boomer" generation, one of the largest population demographics in the country, is at an age where chronic medical problems are extremely common. This course systematically addresses the most common medical conditions presented by ambulatory patients. The dental management and pharmaceutical implications of these patients will be addressed and safety issues will be emphasized. At the completion of this course the participant will:* Be able to confidently assess and manage ambulatory dental patients with cardiovascular disease, diabetes, COPD, bleeding disorders and on anticoagulant therapy, hepatitis, HIV, organ transplants and osteoporosis ♦ Understand the use of medical guidelines, current antibiotic prophylaxis, and the limitations of guidelines ♦ Precautions to be taken with patients on medications that manage their conditions and drug interactions ♦ Be able to diagnose & generate a useful and appropriate medical consultation ♦ How to take a relevant medical history and what to do with that information

Mastering the Root Canal Game: *Learn basic and advanced endodontic tips and tricks to increase endodontic confidence and mastery, including:* Endodontic diagnosis and pulpal testing, case selection, and associated anesthetics ♦ Irrigation protocols during negotiation, instrumentation, and prior to obturation ♦ Discuss in detail access, coronal negotiation, coronal flare, negotiation to working length, obtaining an accurate working length, and an open glide path ♦ Nickel-Titanium rotary and reciprocation files ♦ Sealer and obturation of the root canal system ♦ Post-op instructions and pain management

OSHA, Infection Control and the CA Dental Practice Act: *This course will not only entertain you and your staff but will enable attendees to meet license renewal requirements and state and federal requirements for OSHA Bloodborne Pathogen training, and infection Control with Noel Kelsch. The California Dental Practice Act segment will include:* Basic requirements of the Dental Board, how to avoid Dental Board problems AND Present actual case studies of dentists subjected to Board discipline.

PLUS a Bonus Course-The New Economics of Dentistry: *Whether you own dental practice or are an associate, this bonus segment is for you! Subjects include-* Current trends in associate positions ♦ corporate vs. private practices ♦ Lease issues affecting practice ownership ♦ dissecting the Associate Position ♦ compensation structures ♦ proper vs. improper models ♦ reviews the differences between employee vs. independent contractor

Hands-on Interceptive Ortho: During this lecture, Dr. Veis will review what every GP should know in the recognition and early treatment of orthodontics. Topics will include space maintenance, anterior and posterior crossbites, habits, maintenance of the airway and preventing growth and development problems using Orthodontic and Orthopedic appliances. Upon completion of this course, you will learn to how to recognize the problem, how to treat the patient (diagnosis, case selection, appliance selection, appliance adjustment, and appliance repair) and how to get the most out of your appliance. **Attendees will work hands-on to:** diagnose, within a group setting, a specific case, plan the treatment using the appropriate appliance and then practice an actual appliance adjustment and repair.

Updates in Pediatric Dentistry: *This course features a comprehensive update in Pediatric Dentistry, including:* New psychological insights and research on Behavior Guidance, the dental implications for the increase in Autism, preterm births ♦ ADHD caries formation and prevention as well as how to perform a CAMBRA caries risk assessment ♦ How using Xylitol, Fluoride Varnish, MI Paste, Chlorhexidine, and sealants are effective preventive measures ♦ Indirect Pulp Caps and MTA/Biodentine pulpotomies. ♦ New designs in tooth preparation & when to use GIC, RMGI's, and a new flowable composite for Class I to Class V preps ♦ Diagnosis and treatment of simple and complex traumatic injuries in addition to a simple method for splinting.

Minimally Invasive Adhesion Dentistry: *It is now possible to mimic the natural bond strength of the DEJ with certain techniques and materials. This level of adhesion enables the clinician to restore severely broken-down teeth with direct, low-stress, composite build-ups & onlays in lieu of full-coverage restorations. This lecture will review some of these techniques, materials and key research to perform advanced adhesion, including:* How to seal restorations & dramatically increase bond strengths prior to impressions & temporaries ♦ Layer composites with low-stress & double dentin bond strengths ♦ Identify & treat dentin cracks ♦ Virtually eliminate post-operative sensitivity ♦ How & when to place fibers in composites ♦ How to discuss advanced techniques with patients

Smile Design & Ceramics: Case selection, tooth prep, material choice and then proper bonding techniques will be presented in a practical manner. Smile Design principles will be covered including rational for new practical principles that result in pleasing natural-looking smiles. Many cosmetic cases will be presented for a variety of techniques using indirect restorations. We will go from treatment planning all the way through insertion with step by step instruction for conservative and more complex cases

TUITION	6 COURSES	EACH INDIVIDUAL COURSE
More than 14 days before an event	Dentist: \$549, Staff: \$349 Add Hands-on Ortho Dentist: \$249 Staff: \$149	Dentist: \$149, Staff: \$119 Hands-on Ortho- Dentist: \$349 Staff: \$199
Less than 14 days before an event	Dentist: \$569, Staff: \$369 Add Hands-on Ortho Dentist: \$269 Staff: \$169	Dentist: \$169, Staff: \$139 Hands-on Ortho- Dentist: \$369 Staff: \$219

Fees include continental breakfast, CE credits and free hotel parking. Registration is at 7:30am, courses are 8am-3:30pm. It is an extra \$20 fee for all onsite and walk-in registrations.

Last Name _____ First Name _____ Email _____ Phone _____

Address _____ City _____ State _____ Zip _____

Cancellation Policy: Series registration is non-refundable. For individual courses, with written cancellation at least 14 days prior to a seminar, a refund will be issued less a \$50 cancellation fee. No refund or credit less than 14 days from an event.

Additional registrants _____ Course Dates: _____ Total Amount _____

Register online at www.xcelseminars.com

Mail checks: Xcel Seminars, PO Box 441745, Aurora, CO 80044 • If you have any questions please call Erin at 310-663-4055 • Fax: (866) 332-5891

Although Xcel Seminars does have sponsorship relationships with dental manufacturers and suppliers,
we are dedicated to providing only evidence-based information in our courses.



Approved PACE Program Provider FAGD/MAGD Credit Approval does not imply acceptance by a state or provincial board of dentistry or AGD endorsement. (10/01/15) to (09/30/2019) We are a California Board Approved provider, permit #4536.

A decorative border made of thick, yellow nautical rope with dark outlines, forming a rectangular frame with rounded corners. The rope is coiled at the top and bottom, with the ends visible. The background is a solid brown color.

RUIZ DENTAL SEMINARS



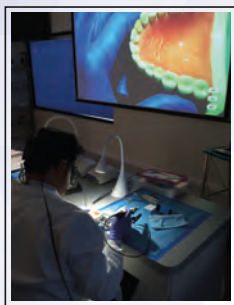
LOS ANGELES INSTITUTE of Clinical Dentistry &

RUIZ DENTAL SEMINARS INC.

BOOK TOUR / LECTURE ADVANCED ADHESION & SUPRA-GINGIVAL PROTOCOL

Dr. Ray Bertolotti & Dr. Jose-Luis Ruiz

1 Day Lecture, 7 Hours of CE. AGD-PACE Approved



Seattle

October 13, 2017

Courtyard Seattle

Downtown/Pioneer Square

Phoenix

October 29, 2017

Embassy Suite

Phoenix- Tempe

Portland

November 9, 2017

OMEF Event Center



San Diego

December 1, 2017

San Diego Marriott

Mission Valley

Oxnard

December 3, 2017

Courtyard by

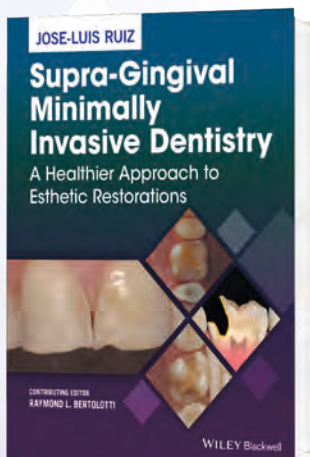
Marriott

Oxnard/Ventura

\$279 USD Tuition

Learning Objectives:

- A review of the most important advancements in the clinical knowledge of adhesive dentistry.
 - A real world approach to managing polymerization stress and shrinkage.
- Simple and predictable techniques to simplify direct and indirect adhesive restorations.
 - A review of current dental materials for adhesive dentistry.
 - Rational and techniques to prevent subgingival margins.
 - And much more...



Author Jose-Luis Ruiz

Contributing Editor Ray L. Bertolotti DDS Ph.D

Contributions from some of the best researchers in dentistry like:

Franklin Tay, Werner Finger, Jungi Tagami, Rella Christensen, Etc...

Published by Wiley-Blackwell, Forward, Gordon Christensen

www.wiley.com

To Reserve Your Seat, Call 818-729-9121 or Visit www.RuizDentalSeminars.com



Choose Any of the Following Six 2 Day Workshops

Practical, Predictable and Beautiful Direct Anterior and Posterior Composite Restorations Including Full Mouth Composite Rehabilitation



Participants will receive over \$1,000 in materials and supplies!



2 Day Workshop • 17 CE Hours

WHY YOU SHOULD TAKE THIS WORKSHOP

- Learn how to do a class II faster and more predictably than ever before
- Learn how to do 6 direct composite veneers in 1 hour
- Learn how to eliminate post-op sensitivity
- Learn how to perform a full mouth rehabilitation with direct composite
- Material choice/selection



LEARNING OBJECTIVES:

- Learn and perform predictable techniques for class II & III composite restoration
- Learn why and how supra-gingival restorations are better and easier
- Place highly esthetic anterior class IV & full composite veneers
- Identify and put in to practice: principle of form, texture and color necessary to perform beautiful composite restorations
- Recognize when and how to use opaquers, modifiers and tints
- Describe and perform a simple and effective finishing and polishing technique
- Learn how and when to use different matrix systems
- Perform a full mouth rehabilitation with direct composite after learning the principles and rationale

January 25-26, 2018
@ The LA Institute
\$2,599

Predictable Success With Porcelain Veneers, PJCS & All Ceramic Crowns Using Supra-Gingival Dentistry Principles



2 Day Workshop • Live Patient Demonstration & Workshop • 17 CE Hours

WHY YOU SHOULD TAKE THIS WORKSHOP

- Learn how to motivate patients to accept veneer services
- Learn how to prepare veneers in 5 minutes per tooth (with some exceptions)
- Learn how to insure patient satisfaction at the end
- Learn how to cement 6 veneers in 1 hour



WORKSHOP OBJECTIVES:

- Learn how veneers are substituted for any full crown
- Understand how to record patients' unique esthetic perspectives and goals and how to blend it with our own and create a smile design
- Prepare and cement several veneers using learned techniques
- Learn why and how supra-gingival restorations are better and easier
- Learn and perform easy and predictable techniques for temporization
- What restorative materials and porcelains to use for long term stability
- What bonding systems and techniques will yield better longevity and low sensitivity
- Live patient veneer cementation
- Step by step techniques and much, much more...

October 20-21, 2017
March 23-24, 2018
@ The LA Institute
\$2,599

Easy, Predictable Porcelain Veneers, PJCS & All Ceramic Crowns



Easy, Predictable Porcelain Onlays, Full Crowns, Etc. Using Supra-Gingival Dentistry Principals



2 Day Workshop • 14 CE Hours

"Not only did the course meet my expectations, it was fun! I will not hesitate in taking another one of his seminars."

Claudia Navarro, DDS - Inglewood, CA

"Since taking the Supra-gingival workshop, fixed prosthetics has truly become simplified and much more predictable than ever before... Preps, impressions and cementation are easier, cleaner and more predictable. If you are looking for a course that truly improves the way you do dentistry with the utmost efficiency. I cannot recommend any other course over Supra-gingival dentistry."

Dr. Ali Sheikholeslam - Sacramento, CA



LEARNING OBJECTIVES FOR THIS LIVE PATIENT WORKSHOP:

- Learn why and how supra-gingival restorations are better and easier
- Perform multiple onlay preparations on a very realistic simulator
- Understand and perform simple, predictable impression techniques
- Learn how to choose the correct type of restorative material and translucency that will allow for Supra-gingival dentistry
- Understand and perform sensitive-free and easy cementation techniques specific to posterior onlays
- Participants will learn and perform, margin elevation, and enamel preservation techniques
- And much, much more...

September 8-9, 2017
@ The LA Institute
~~\$2,599~~ \$2,099

At Our Workshops We Provide Absolutely Everything For You, From Materials To Food. Excluding Loupes.

To Reserve Your Seat, Call 818-729-9121 or Visit www.RuizDentalSeminars.com

Or Take the Entire Mini-Residency (Best Value, Savings of \$5,000)

Implementing Occlusal Therapy Workshop: Level 1

USING THE OCCLUSAL DISEASE MANAGEMENT SYSTEM

2 Day Workshop • 17 CE Hours

SEE WHY COLLEAGUES THINK THIS COURSE IS MORE PRACTICAL AND EASY TO IMPLEMENT THAN DAWSON, SPEARS OR KOIS.

WHY YOU SHOULD TAKE THIS WORKSHOP

- Learn how to minimize or eliminate fractured restorations
- Minimize or eliminate post-operative sensitivity
- Greatly increase available services both in restorative dentistry as well as esthetic dentistry
- Motivate patient to accept night guards and start making 20 to 30 every month



LEARNING OBJECTIVES:

- Learn easy and reliable diagnosis using the 7 signs and symptoms of OD
- Perform an 11 point comprehensive occlusal & TMJ clinical evaluation to assess TMJ health and improve restorative longevity
- Learn the indispensable 3 Golden Rules of Occlusion
- Learn how and when to use night guards and splints
- Perform diagnostic cast study evaluation and trial equilibration, additive or subtractive
- Perform several recordings of CR bite, load testing, face bow records and other indispensable skills needed for occlusal diagnosis and therapy
- Perform an occlusal and TMJ examination of yourself with a full treatment plan

FEW SEATS AVAILABLE November 17-18, 2017

February 23-24, 2018

@ The LA Institute

~~\$2,599~~ \$2,099

Restoring The Worn Dentition and Complex Cases Applied Occlusion & Diagnosis: Level 2

2 Day Workshop • 14 CE Hours

(Completion of "Implementing Occlusal Therapy Workshop is a prerequisite)



IN THIS COURSE YOU WILL:

- Learn the steps for full mouth rehabilitation diagnosis
- Perform two simulated rehabilitations: one opening VDO and one without
- Perform several diagnosis exercises
- Prepare & temporize using a wax up
- What to provide and how to accurately communicate to the lab
- Learn how to take bite records during different stages
- Learn how to stage a case over time
- Final bite adjustment and proper follow-up protocol
- Learn minimally invasive full rehabilitations
- Learn how to open the bite using direct composite

WHY YOU SHOULD TAKE THIS WORKSHOP

- Learn skills necessary to present and get acceptance to more extensive rehabilitation cases
- Learn how to offer patient more conservative alternatives to full mouth rehabilitation
- Develop confidence treating more extensive cases
- Learn the indispensable techniques to do cases in stages, over multiple years



December 8-9, 2017

@ The LA Institute

\$2,599

Evidence Based Minimally Invasive Implant Dentistry

USING SHORT, NARROW, PLATFORM AND MINI IMPLANTS FOR THE GENERAL DENTIST

2 Day Workshop • 17 CE Hours

- Did you know that research shows that implant failure in bone augmented ridges is a staggering 7.5% before loading and 11.3% during the first five years of function?
- Research shows that success with narrow and shorter implants on natural bone, even with some angulations, is highly successful!
- Stop learning difficult, unpredictable techniques! Learn to place & restore simple implants in three days by using the logical approach.



LEARNING OBJECTIVES:

- Learn the current provisions of the Academy of Osseointegration
- How to choose between regular, narrow and mini-implants
- Perform four simulated, yet realistic implant placements using correct surgical protocol
- Perform four simplest and predictable restorative procedures!
- What x-rays and records are really necessary
- Simple surgical procedures to ensure safe and predictable results
- When it's better to refer
- Detailed equipment and supplies list will be provided for immediate implementation
- A system to keep implant parts cost down! Charge less to patients and have higher profits

WHY YOU SHOULD TAKE THIS WORKSHOP

- Develop the confidence to place single implants on Monday
- Learn how to avoid implant complications
- Learn how to restore simple implants
- Learn how to place denture implant attachments



August 18-19, 2017

@ The LA Institute

\$2,599

At Our Workshops We Provide Absolutely Everything For You, From Materials To Food. Excluding Loupes.

To Reserve Your Seat, Call 818-729-9121 or Visit www.RuizDentalSeminars.com

Hands-on Workshops in 2017 till March 2018

Implants

August 18-19, 2017
\$2,599

Onlays

~~May 5-6, 2017~~ **SOLD OUT**
September 8-9, 2017
\$2,599

Veneers

~~April 7-8, 2017~~ **SOLD OUT**
~~October 20-21, 2017~~ **SOLD OUT**
\$2,599

Direct Composite

~~July 14-15, 2017~~ **SOLD OUT**
November 3-4, 2017 **FEW SEATS AVAILABLE**
\$2,599

Occlusion Level 1

November 17-18, 2017
\$2,599

Occlusion Level 2

December 8-9, 2017
\$2,599

2018 COURSES

Direct Composite

January 25-26, 2018
\$2,999

Occlusion Level 1

February 23-24, 2018
\$2,999

Veneers

March 23-24, 2018
\$2,999

To view the full 2018 Workshop Schedule, please visit www.ruizdentalseminars.com

SAVE \$500 ON FEATURE COURSES

Onlays

September 8-9, 2017
~~\$2,599~~ Now \$2,099

Occlusion Level 1

November 17-18, 2017
~~\$2,599~~ Now \$2,099

Supra-Gingival, Healthier Dentistry Mini-Residency

These series of workshops are designed to update the new graduate and the seasoned dentist with the most up-to-date techniques to provide patients with Supra-gingival minimally invasive dentistry. These techniques are more biocompatible, healthier and better for the patient. They are also more predictable and enjoyable for the dentist. In order to properly serve our patients and thrive in practice in today's environment, the modern clinician must be skilled in multiple areas: diagnosis, patient motivation, restorative dentistry (direct and indirect), occlusion and simple implants. This Mini-Residency track builds with each course taken and offers systems to implement all of the above skills. This will lead to a more prosperous and enjoyable professional life.

TUITION FOR DENTISTS - \$10,999

Best Value (Savings of \$5,000)

RECENT GRADUATES - \$8,999

FINANCING IS AVAILABLE!

Multiple options to choose from!

Check the catalog schedule and our website for available dates.

"I have been working closely with Dr. Ruiz for many years, and I know he is an excellent clinician, and his programs are both practical and useful."

Gordon Christensen, DDS, PhD

To Reserve Your Seat, Call 818-729-9121 or Visit www.RuizDentalSeminars.com