

A decorative border made of thick, yellow, braided rope with dark outlines, forming a rectangular frame with rounded corners. The rope is knotted at the top center and bottom center.

# **XCEL SEMINARS**



# 12th Annual Comprehensive Dental Skills Series

Four Points Sheraton San Jose

## **Aug. 13, 2017: Esthetic Pediatric Dentistry & Treating**

**Trauma** *Dr. Mark Cannon is Pedodontic Diplomate and Professor at Northwestern University who has worked on the cutting edge of teaching the newest and best dental care for children*

## **Aug 20: Hands-on Oral Surgery & Setting the Stage for**

**Optimal Ridge Preservation** *Dr. Ron Wang has received extensive training in oral and periodontal surgery, implants and fixed prosthetics.*

## **Aug. 27: Comprehensive Introduction to Dental Sleep Apnea**

**(8AM-5PM and 8 CE Units)** *Dr. Rob Veis has been practicing for almost 30 years, was a professor at USC for 12 years and lectures nationally on restorative dentistry and appliance therapy.*

**Four Points Sheraton San Jose 1471 N 4th St, San Jose, CA 95112 (408) 452-0200  
(Minutes from 680 & 101 Fwys)**

**ALL COURSES ARE ON SUNDAYS & 7 CA & AGD CEs EACH**  
**\$179 FOR THE 8/13 LECTURE,**  
**\$399 FOR THE HANDS-ON ORAL SURGERY,**  
**\$249 FOR THE 8CE INTRO TO SLEEP APNEA**  
**OR THE ENTIRE 3 COURSE SERIES**  
**(22 CA & AGD CEs) FOR ONLY \$549**

COURSE SERIES  
SPONSORED BY:



Geistlich  
Biomaterials



## COURSE TOPICS

**Esthetic Peds and Treating Trauma:** This presentation will discuss all aspects of Esthetic Pediatric Dentistry for the demanding patient and parent! Specifically; anterior and posterior composites, esthetic crowns (zirconium and IPS e.max), tissue regeneration, laser therapy, preventive and interceptive orthodontics, esthetic space maintainers, and, of course, behavior management. Dr. Cannon will also provide a comprehensive review of preventive dentistry, using the latest in probiotic therapy and the latest in microbiome research.

**Hands-on Intro to Oral Surgery and Ridge Preservation:** *This comprehensive program will show hands-on surgical extractions and socket grafting. Topics Include:* Gain a greater appreciation for diagnosis and assessment of tooth root anatomy and alveolar shape and form ♦ Understanding the socket anatomy based treatment algorithm ♦ Understand how to treatment plan in the best way to reach the desired outcome ♦ Learn the principles of minimally traumatic tooth extraction ♦ Gain an understanding of the biology of ridge resorption after extraction of a tooth ♦ Learn about the biofunctionality of biomaterials and its influence on extraction socket healing ♦ (HANDS-ON) Practice important techniques for minimally invasive tooth extraction plus preparing and placing biomaterials to achieve optimal ridge preservation

**Intro to Dental Sleep Medicine (8 CE Units):** *This course is intended to provide a comprehensive overview of diagnosis and treatment of sleep apnea cases for dentists interested in adding this growth area to their practices. Dr. Veis will cover all aspects diagnosis and the sleep study, deciding which appliances to use for treatment, measuring and fitting the appliances, interacting with the fabricating lab, and how to manage the billings to medical insurance, including:* Introduction to sleep stages, disorders and why there is a need for treatment? ♦ Sleep apnea signs/symptoms/clinical issues and treating sleep apnea via dental appliance protocol review ♦ Services to do and read sleep tests ♦ Overview of Appliances - pro's and con's of all of the major sleep appliances ♦ Model analysis, mixed dentition and how to take construction bites for making certain appliances ♦ Group work on an actual case and diagnosing appliance ♦ Services to fully take care of the medical billing for these services

TUITION	3 COURSE SERIES MEMBERSHIP	EACH INDIVIDUAL COURSE
More than 14 days before an event	Dentist: \$549 Staff: \$349	8/13 Lecture - Dentist: \$179 Staff: \$149 Hands-on Intro to Oral Surgery: \$399 8CE Intro to Sleep Apnea: \$249
Less than 14 days before an event	Dentist: \$569 Staff: \$369	8/13 Lecture - Dentist: \$199 Staff: \$169 Hands-on Intro to Oral Surgery: \$419 8CE Intro to Sleep Apnea: \$2649

Fees include continental breakfast, CE credits and free hotel parking. Registration is at 7:30am, the courses are 8am-3:30pm. It is an extra \$20 fee for all onsite and walk-in registrations.

Last Name \_\_\_\_\_ First Name \_\_\_\_\_ Email \_\_\_\_\_ Phone \_\_\_\_\_

Address \_\_\_\_\_ City \_\_\_\_\_ State \_\_\_\_\_ Zip \_\_\_\_\_

**Cancellation Policy:** Series registration is non-refundable. For individual courses, with written cancellation at least 14 days prior to a seminar, a refund will be issued less a \$50 cancellation fee. No refund or credit less than 14 days from an event.

Additional registrants \_\_\_\_\_ Course Dates: \_\_\_\_\_ Total Amount \_\_\_\_\_

**Register online at [www.xcelseminars.com](http://www.xcelseminars.com)**

Mail checks: Xcel Seminars, PO Box 441745, Aurora, CO 80044 • If you have any questions please call Janine at 480-717-2230 • Fax: (866) 332-5891

Although Xcel Seminars does have sponsorship relationships with dental manufacturers and suppliers,  
we are dedicated to providing only evidence-based information in our courses.



Approved PACE Program Provider FAGD/MAGD Credit Approval does not imply acceptance by a state or provincial board of dentistry or AGD endorsement. (10/01/15) to (09/30/2019) We are a California Board Approved provider, permit #4536.



**ACE DENTAL**





DENTAL HYGIENISTS

# Practice Management Software **INTRODUCTORY OFFER**

Get your scheduling or clinical software

**starting at \$499.<sup>00</sup>**

**PLUS** the option for support and recall/reminders

**for only \$99.00/mo**

ACE-Dental Software  
Easy to use and affordable!



Call today 888-667-4272 Ext. 105  
[www.ace-dental.com](http://www.ace-dental.com)



# Big Summer Blow-Out Practice Management Software

*“ I have been using ACE Dental Software for over a decade for my portable school based dental program. It has been a wonderful asset in helping to reach the patient base in the rural schools. We are able to keep track of our various locations and produce valuable statistics and trends in our patient care. ACE has been an exceptional asset for our business.*

*Many thanks for the outstanding service and support we have always received! The staff goes above and beyond taking care of our individual needs and concerns.*

*I definitely recommend ACE and their superb product.”*

*-Educare Dental Services*



*“ I have been an ACE Dental software user for five years, and it works great in my office. Before ACE, I used Perfectbyte for several years. ACE is far more complete, efficient, and user friendly. My staff has worked in other offices that have used Dentrix, EasyDental, and Eaglesoft; they all much prefer ACE. ACE technical support is outstanding. I have never lost data for any reason (that is most crucial!). When we call tech support with a problem or question, we almost always get connected to a familiar voice who can help us. I also subscribe at an ACE add-on that confirms patients with email, text messages, and phone calls. That saves the office staff much time, and cancellations and failures have been reduced to almost zero.”*

*-Myakka Family Care*

**ACE-Dental Software**  
Easy to use and affordable!



Call today 888-667-4272 Ext. 105  
[www.ace-dental.com](http://www.ace-dental.com)

A decorative border made of thick, yellow nautical rope with dark outlines, arranged in a rectangular shape with rounded corners. The rope has a detailed three-strand braid pattern.

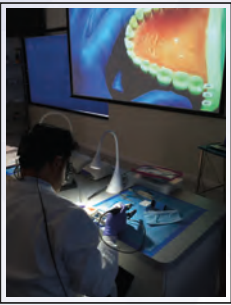
# **RUIZ DENTAL SEMINARS**





# LOS ANGELES INSTITUTE of Clinical Dentistry &

RUIZ DENTAL SEMINARS INC.



## BOOK TOUR / LECTURE ADVANCED ADHESION & SUPRA-GINGIVAL PROTOCOL

**Dr. Ray Bertolotti & Dr. Jose-Luis Ruiz**

1 Day Lecture, 7 Hours of CE. AGD-PACE Approved



### Seattle

October 13, 2017  
Courtyard Seattle  
Downtown/Pioneer Square

### Phoenix

October 29, 2017  
Embassy Suite  
Phoenix- Tempe

### Portland

November 9, 2017  
OMEF Event Center



### San Diego

December 1, 2017  
San Diego Marriott  
Mission Valley

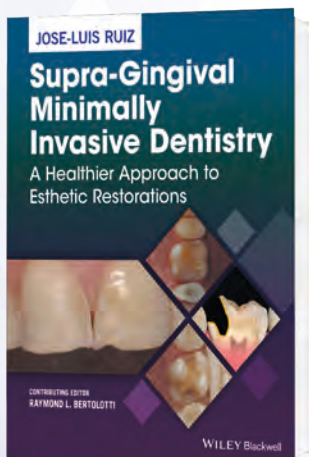
### Oxnard

December 3, 2017  
Courtyard by  
Marriott  
Oxnard/Ventura

**\$279** USD Tuition

### Learning Objectives:

- A review of the most important advancements in the clinical knowledge of adhesive dentistry.
  - A real world approach to managing polymerization stress and shrinkage.
- Simple and predictable techniques to simplify direct and indirect adhesive restorations.
  - A review of current dental materials for adhesive dentistry.
  - Rational and techniques to prevent subgingival margins.
  - And much more...



Author Jose-Luis Ruiz  
Contributing Editor Ray L. Bertolotti DDS Ph.D

*Contributions from some of the best researchers in dentistry like:*  
Franklin Tay, Werner Finger, Jungi Tagami, Rella Christensen, Etc...

Published by Wiley-Blackwell, Forward, Gordon Christensen  
[www.wiley.com](http://www.wiley.com)

To Reserve Your Seat, Call 818-729-9121 or Visit [www.RuizDentalSeminars.com](http://www.RuizDentalSeminars.com)





# Choose Any of the Following Six 2 Day Workshops

## Practical, Predictable and Beautiful Direct Anterior and Posterior Composite Restorations Including Full Mouth Composite Rehabilitation



Participants will receive over \$1,000 in materials and supplies!



2 Day Workshop • 17 CE Hours

### WHY YOU SHOULD TAKE THIS WORKSHOP

- Learn how to do a class II faster and more predictably than ever before
- Learn how to do 6 direct composite veneers in 1 hour
- Learn how to eliminate post-op sensitivity
- Learn how to perform a full mouth rehabilitation with direct composite
- Material choice/selection



### LEARNING OBJECTIVES:

- Learn and perform predictable techniques for class II & III composite restoration
- Learn why and how supra-gingival restorations are better and easier
- Place highly esthetic anterior class IV & full composite veneers
- Identify and put in to practice: principle of form, texture and color necessary to perform beautiful composite restorations
- Recognize when and how to use opaquers, modifiers and tints
- Describe and perform a simple and effective finishing and polishing technique
- Learn how and when to use different matrix systems
- Perform a full mouth rehabilitation with direct composite after learning the principles and rationale

January 25-26, 2018

@ The LA Institute

**\$2,599**

## Predictable Success With Porcelain Veneers, PJCS & All Ceramic Crowns Using Supra-Gingival Dentistry Principles



2 Day Workshop • Live Patient Demonstration & Workshop • 17 CE Hours

### WHY YOU SHOULD TAKE THIS WORKSHOP

- Learn how to motivate patients to accept veneer services
- Learn how to prepare veneers in 5 minutes per tooth (with some exceptions)
- Learn how to insure patient satisfaction at the end
- Learn how to cement 6 veneers in 1 hour



### WORKSHOP OBJECTIVES:

- Learn how veneers are substituted for any full crown
- Understand how to record patients' unique esthetic perspectives and goals and how to blend it with our own and create a smile design
- Prepare and cement several veneers using learned techniques
- Learn why and how supra-gingival restorations are better and easier
- Learn and perform easy and predictable techniques for temporization
- What restorative materials and porcelains to use for long term stability
- What bonding systems and techniques will yield better longevity and low sensitivity
- Live patient veneer cementation
- Step by step techniques and much, much more...

October 20-21, 2017

March 23-24, 2018

@ The LA Institute

**\$2,599**

## Easy, Predictable Porcelain Veneers, PJCS & All Ceramic Crowns



## Easy, Predictable Porcelain Onlays, Full Crowns, Etc. Using Supra-Gingival Dentistry Principals



2 Day Workshop • 14 CE Hours

*"Not only did the course meet my expectations, it was fun! I will not hesitate in taking another one of his seminars."*

Claudia Navarro, DDS - Inglewood, CA

*"Since taking the Supra-gingival workshop, fixed prosthetics has truly become simplified and much more predictable than ever before... Preps, impressions and cementation are easier, cleaner and more predictable. If you are looking for a course that truly improves the way you do dentistry with the utmost efficiency. I cannot recommend any other course over Supra-gingival dentistry."*

Dr. Ali Sheikholeslam - Sacramento, CA



### LEARNING OBJECTIVES FOR THIS LIVE PATIENT WORKSHOP:

- Learn why and how supra-gingival restorations are better and easier
- Perform multiple onlay preparations on a very realistic simulator
- Understand and perform simple, predictable impression techniques
- Learn how to choose the correct type of restorative material and translucency that will allow for Supra-gingival dentistry
- Understand and perform sensitive-free and easy cementation techniques specific to posterior onlays
- Participants will learn and perform, margin elevation, and enamel preservation techniques
- And much, much more...

September 8-9, 2017

@ The LA Institute

**~~\$2,599~~ \$2,099**

At Our Workshops We Provide Absolutely Everything For You, From Materials To Food. Excluding Loupes.

To Reserve Your Seat, Call 818-729-9121 or Visit [www.RuizDentalSeminars.com](http://www.RuizDentalSeminars.com)

# Or Take the Entire Mini-Residency (Best Value, Savings of \$5,000)

## Implementing Occlusal Therapy Workshop: Level 1

USING THE OCCLUSAL DISEASE MANAGEMENT SYSTEM

2 Day Workshop • 17 CE Hours

SEE WHY COLLEAGUES THINK THIS COURSE IS MORE PRACTICAL AND EASY TO IMPLEMENT THAN DAWSON, SPEARS OR KOIS.

### WHY YOU SHOULD TAKE THIS WORKSHOP

- Learn how to minimize or eliminate fractured restorations
- Minimize or eliminate post-operative sensitivity
- Greatly increase available services both in restorative dentistry as well as esthetic dentistry
- Motivate patient to accept night guards and start making 20 to 30 every month



### LEARNING OBJECTIVES:

- Learn easy and reliable diagnosis using the 7 signs and symptoms of OD
- Perform an 11 point comprehensive occlusal & TMJ clinical evaluation to assess TMJ health and improve restorative longevity
- Learn the indispensable 3 Golden Rules of Occlusion
- Learn how and when to use night guards and splints
- Perform diagnostic cast study evaluation and trial equilibration, additive or subtractive
- Perform several recordings of CR bite, load testing, face bow records and other indispensable skills needed for occlusal diagnosis and therapy
- Perform an occlusal and TMJ examination of yourself with a full treatment plan

**FEW SEATS AVAILABLE November 17-18, 2017**

**February 23-24, 2018**

**@ The LA Institute**

**~~\$2,599~~ \$2,099**

## Restoring The Worn Dentition and Complex Cases Applied Occlusion & Diagnosis: Level 2

2 Day Workshop • 14 CE Hours

(Completion of "Implementing Occlusal Therapy Workshop is a prerequisite)



### WHY YOU SHOULD TAKE THIS WORKSHOP

- Learn skills necessary to present and get acceptance to more extensive rehabilitation cases
- Learn how to offer patient more conservative alternatives to full mouth rehabilitation
- Develop confidence treating more extensive cases
- Learn the indispensable techniques to do cases in stages, over multiple years

### IN THIS COURSE YOU WILL:

- Learn the steps for full mouth rehabilitation diagnosis
- Perform two simulated rehabilitations: one opening VDO and one without
- Perform several diagnosis exercises
- Prepare & temporize using a wax up
- What to provide and how to accurately communicate to the lab
- Learn how to take bite records during different stages
- Learn how to stage a case over time
- Final bite adjustment and proper follow-up protocol
- Learn minimally invasive full rehabilitations
- Learn how to open the bite using direct composite



**December 8-9, 2017**

**@ The LA Institute**

**\$2,599**

## Evidence Based Minimally Invasive Implant Dentistry

USING SHORT, NARROW, PLATFORM AND MINI IMPLANTS FOR THE GENERAL DENTIST

2 Day Workshop • 17 CE Hours

- Did you know that research shows that implant failure in bone augmented ridges is a staggering 7.5% before loading and 11.3% during the first five years of function?
- Research shows that success with narrow and shorter implants on natural bone, even with some angulations, is highly successful!
- Stop learning difficult, unpredictable techniques! Learn to place & restore simple implants in three days by using the logical approach.

### WHY YOU SHOULD TAKE THIS WORKSHOP

- Develop the confidence to place single implants on Monday
- Learn how to avoid implant complications
- Learn how to restore simple implants
- Learn how to place denture implant attachments



### LEARNING OBJECTIVES:

- Learn the current provisions of the Academy of Osseointegration
- How to choose between regular, narrow and mini-implants
- Perform four simulated, yet realistic implant placements using correct surgical protocol
- Perform four simplest and predictable restorative procedures!
- What x-rays and records are really necessary
- Simple surgical procedures to ensure safe and predictable results
- When it's better to refer
- Detailed equipment and supplies list will be provided for immediate implementation
- A system to keep implant parts cost down! Charge less to patients and have higher profits

**August 18-19, 2017**

**@ The LA Institute**

**\$2,599**

**At Our Workshops We Provide Absolutely Everything For You, From Materials To Food. Excluding Loupes.**

**To Reserve Your Seat, Call 818-729-9121 or Visit [www.RuizDentalSeminars.com](http://www.RuizDentalSeminars.com)**



# Hands-on Workshops in 2017 till March 2018

## Implants

August 18-19, 2017  
\$2,599

## Onlays

~~May 5-6, 2017~~ **SOLD OUT**  
September 8-9, 2017  
\$2,599

## Veneers

~~April 7-8, 2017~~ **SOLD OUT**  
~~October 20-21, 2017~~ **SOLD OUT**  
\$2,599

## Direct Composite

~~July 14-15, 2017~~ **SOLD OUT**  
November 3-4, 2017 **FEW SEATS AVAILABLE**  
\$2,599

## Occlusion Level 1

November 17-18, 2017  
\$2,599

## Occlusion Level 2

December 8-9, 2017  
\$2,599

## 2018 COURSES

### Direct Composite

January 25-26, 2018  
\$2,999

### Occlusion Level 1

February 23-24, 2018  
\$2,999

### Veneers

March 23-24, 2018  
\$2,999

To view the full 2018 Workshop Schedule, please visit [www.ruizdentalseminars.com](http://www.ruizdentalseminars.com)

## SAVE \$500 ON FEATURE COURSES

### Onlays

September 8-9, 2017  
~~\$2,599~~ Now \$2,099

### Occlusion Level 1

November 17-18, 2017  
~~\$2,599~~ Now \$2,099

## Supra-Gingival, Healthier Dentistry Mini-Residency

These series of workshops are designed to update the new graduate and the seasoned dentist with the most up-to-date techniques to provide patients with Supra-gingival minimally invasive dentistry. These techniques are more biocompatible, healthier and better for the patient. They are also more predictable and enjoyable for the dentist. In order to properly serve our patients and thrive in practice in today's environment, the modern clinician must be skilled in multiple areas: diagnosis, patient motivation, restorative dentistry (direct and indirect), occlusion and simple implants. This Mini-Residency track builds with each course taken and offers systems to implement all of the above skills. This will lead to a more prosperous and enjoyable professional life.

**TUITION FOR DENTISTS - \$10,999**

Best Value (Savings of \$5,000)

**RECENT GRADUATES - \$8,999**

**FINANCING IS AVAILABLE!**

*Multiple options to choose from!*

Check the catalog schedule and our website for available dates.

*"I have been working closely with Dr. Ruiz for many years, and I know he is an excellent clinician, and his programs are both practical and useful."*

Gordon Christensen, DDS, PhD

To Reserve Your Seat, Call 818-729-9121 or Visit [www.RuizDentalSeminars.com](http://www.RuizDentalSeminars.com)